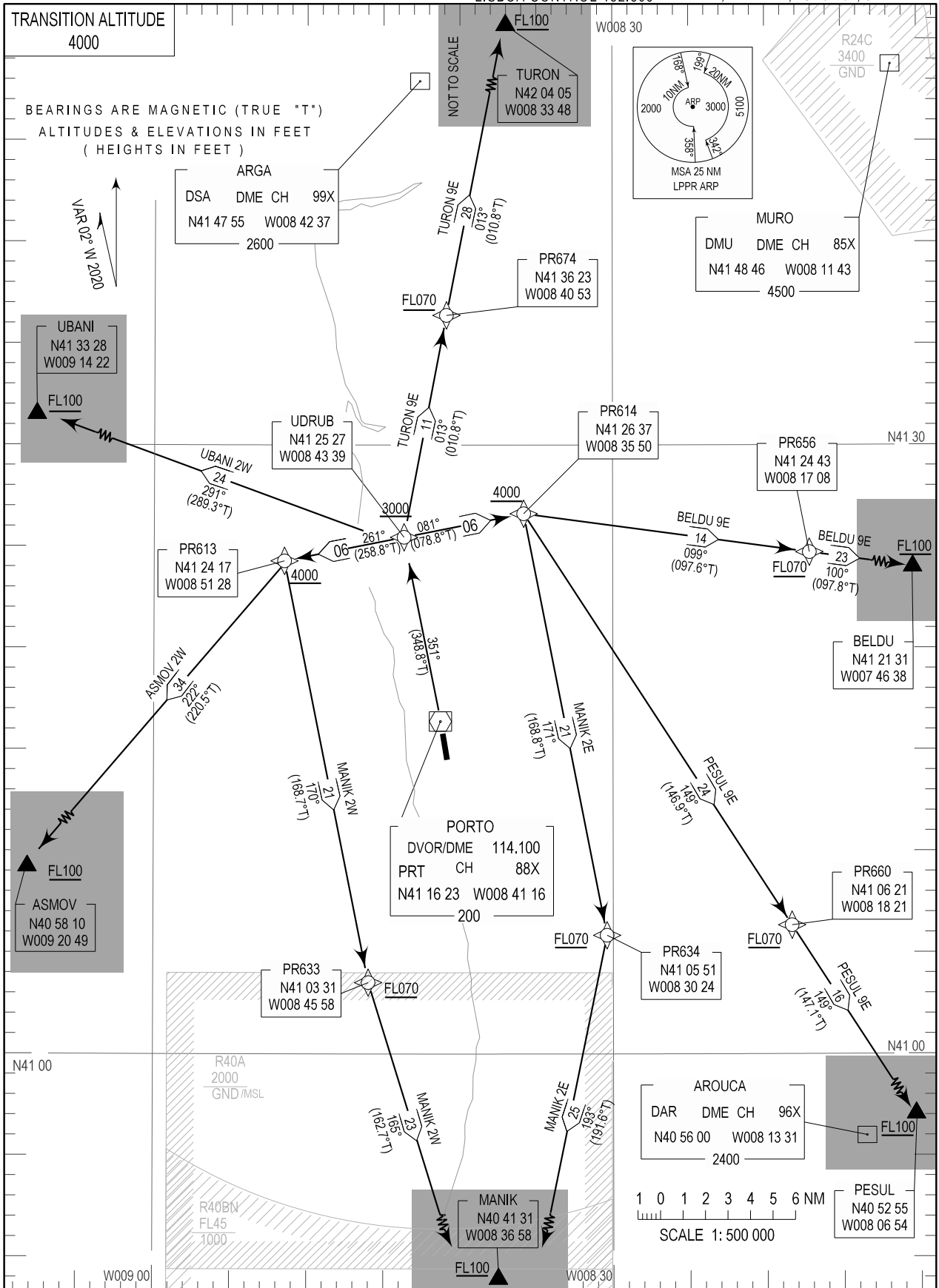


STANDARD DEPARTURE CHART - INSTRUMENT (SID) - ICAO

PORTO INFORMATION 124.305
PORTO TOWER 118.005
PORTO APPROACH 120.910
LISBOA CONTROL 132.305

PORTO / LPPR
RNAV Rwy 35

ASMOV 2W, BELDU 9E, PESUL 9E
MANIK 2E, MANIK 2W, TURON 9E, UBANI 2W



SID Procedure Coding Table

Path Terminator	Waypoint			Course/Track MAG(True)	Dist NM	Turn Direction	Constraints		Nav Specs	Remarks
	Identifier	Flyover	Coordinates				Level	Speed		
Porto SID RNAV 1 RWY 35 – BELDU 9E										
CF	UDRUB	-	412527.33N 0084339.16W	351 (348.8)	-	-	+3000ft	-	RNAV 1	
TF	PR614	-	412636.94N 0083549.57W	081 (078.8)	6.00	Right	+4000ft	-	RNAV 1	
TF	PR656	-	412443.11N 0081707.95W	099 (097.6)	14.19	Right	+FL070	-	RNAV 1	
TF	BELDU	-	412130.63N 0074638.02W	100 (097.8)	23.18	-	+FL100	-	RNAV 1	
Porto SID RNAV 1 RWY 35 – ASMOV 2W										
CF	UDRUB	-	412527.33N 0084339.16W	351 (348.8)	-	-	+3000ft	-	RNAV 1	
TF	PR613	-	412417.18N 0085128.48W	261 (258.8)	6.00	Left	+4000ft	-	RNAV 1	
TF	ASMOV	-	405809.81N 0092049.33W	222 (220.5)	34.24	Left	+FL100	-	RNAV 1	
Porto SID RNAV 1 RWY 35 – PESUL 9E										
CF	UDRUB	-	412527.33N 0084339.16W	351 (348.8)	-	-	+3000ft	-	RNAV 1	
TF	PR614	-	412636.94N 0083549.57W	081 (078.8)	6.00	Right	+4000ft	-	RNAV 1	
TF	PR660	-	410620.52N 0081821.18W	149 (146.9)	24.17	Right	+FL070	-	RNAV 1	
TF	PESUL	-	405255.32N 0080654.37W	149 (147.1)	15.97	-	+FL100	-	RNAV 1	
Porto SID RNAV 1 RWY 35 – MANIK 2E										
CF	UDRUB	-	412527.33N 0084339.16W	351 (348.8)	-	-	+3000ft	-	RNAV 1	
TF	PR614	-	412636.94N 0083549.57W	081 (078.8)	6.00	Right	+4000ft	-	RNAV 1	
TF	PR634	-	410550.74N 0083024.43W	171 (168.8)	21.16	Right	+FL070	-	RNAV 1	
TF	MANIK	-	404130.65N 0083658.21W	193 (191.6)	24.82	Right	+FL100	-	RNAV 1	
Porto SID RNAV 1 RWY 35 – MANIK 2W										
CF	UDRUB	-	412527.33N 0084339.16W	351 (348.8)	-	-	+3000ft	-	RNAV 1	
TF	PR613	-	412417.18N 0085128.48W	261 (258.8)	6.00	Left	+4000ft	-	RNAV 1	
TF	PR633	-	410330.97N 0084558.39W	170 (168.7)	21.17	Left	+FL070	-	RNAV 1	
TF	MANIK	-	404130.65N 0083658.21W	165 (162.7)	23.03	Left	+FL100	-	RNAV 1	
Porto SID RNAV 1 RWY 35 – UBANI 2W										
CF	UDRUB	-	412527.33N 0084339.16W	351 (348.8)	-	-	+3000ft	-	RNAV 1	
TF	UBANI	-	413328.27N 0091422.27W	291 (289.3)	24.44	Left	+FL100	-	RNAV 1	
Porto SID RNAV 1 RWY 35 – TURON 9E										
CF	UDRUB	-	412527.33N 0084339.16W	351 (348.8)	-	-	+3000ft	-	RNAV 1	
TF	PR674	-	413623.27N 0084053.12W	013 (010.8)	11.12	Right	+FL070	-	RNAV 1	
TF	TURON	-	420404.53N 0083348.30W	013 (010.8)	28.18	-	+FL100	-	RNAV 1	

Porto SID RNAV 1 RWY 35

Designator	Route	After Take-off		Remarks
		Climb to ALT/FL	Contact	
BELDU9E	After take-off proceed to UDRUB. Turn right to PR614 –PR656 - BELDU.	FL100	Porto Approach 120.910 MHZ	
ASMOV2W	After take-off proceed to UDRUB. Turn left to PR613 - ASMOV.			
PESUL9E	After take-off proceed to UDRUB. Turn right to PR614 – PR660 – PESUL.			
MANIK2E	After take-off proceed to UDRUB. Turn right to PR614 – PR634 - MANIK.			
MANIK2W	After take-off proceed to UDRUB. Turn left to PR613 – PR633 - MANIK.			
UBANI2W	After take-off proceed to UDRUB. Turn left to UBANI.			
TURON9E	After take-off proceed to UDRUB. Turn right to PR674 – TURON.			