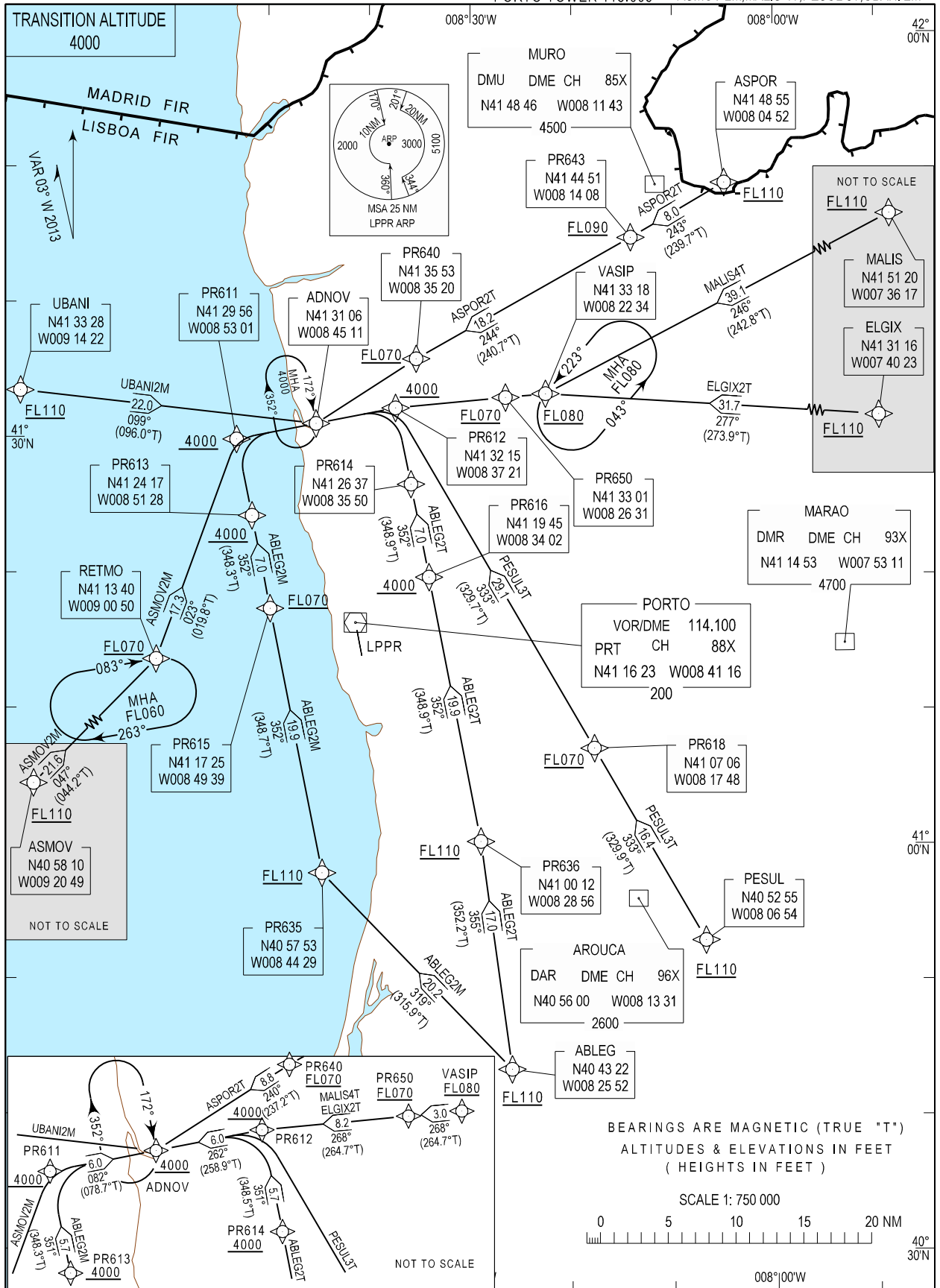


STANDARD ARRIVAL CHART -  
INSTRUMENT (STAR) - ICAO

PORTO INFORMATION 124.305  
LISBOA CONTROL 132.305  
PORTO APPROACH 121.105  
PORTO TOWER 118.005

PORTO / LPPR  
RNAV RWY17  
ABLEG 2M, ABLEG 2T, ASPOR 2T, ELGIX 2T  
ASMOV 2M, MALIS 4T, PESUL 3T, UBANI 2M



New DME DAR, DMR and DMU.

STAR Procedure Coding Table

Path Terminator	Waypoint			Course/Track MAG (True)	Dist NM	Turn Direction	Constraints		Nav Specs	Remarks
	Identifier	Flyover	Coordinates				Level	Speed		
<b>Porto STAR RNAV 1 RWY 17 – ABLEG 2M</b>										
IF	ABLEG	-	404321.57N 0082552.21W	-	-	-	+FL110	-	RNAV 1	Clearance limit: ADNOV 4000ft
TF	PR635	-	405752.51N 0084428.75W	319 (315.9)	20.25	Left	+FL110	-	RNAV 1	
TF	PR615	-	411724.96N 0084939.25W	352 (348.7)	19.92	Right	+FL070	-	RNAV 1	
TF	PR613	-	412417.18N 0085128.48W	352 (348.7)	7.00	-	+4000ft	-	RNAV 1	
TF	PR611	-	412955.61N 0085301.40W	351 (348.3)	5.76	-	+4000ft	-	RNAV 1	
TF	ADNOV	-	413105.68N 0084511.39W	082 (078.7)	6.00	Right	+4000ft	-	RNAV 1	
<b>Porto STAR RNAV 1 RWY 17 – ABLEG 2T</b>										
IF	ABLEG	-	404321.57N 0082552.21W	-	-	-	+FL110	-	RNAV 1	Clearance limit: ADNOV 4000ft
TF	PR636	-	410012.08N 0082856.07W	355 (352.2)	16.99	-	+FL110	-	RNAV 1	
TF	PR616	-	411944.73N 0083401.99W	352 (348.9)	19.91	-	+4000ft	-	RNAV 1	
TF	PR614	-	412636.94N 0083549.57W	352 (348.9)	7.00	-	+4000ft	-	RNAV 1	
TF	PR612	-	413215.21N 0083721.09W	351 (348.5)	5.75	-	+4000ft	-	RNAV 1	
TF	ADNOV	-	413105.68N 0084511.39W	262 (258.9)	6.00	Left	+4000ft	-	RNAV 1	
<b>Porto STAR RNAV 1 RWY 17 – ASPOR 2T</b>										
IF	ASPOR	-	414854.49N 0080452.32W	-	-	-	+FL110	-	RNAV 1	Clearance limit: ADNOV 4000ft
TF	PR643	-	414450.88N 0081408.49W	243 (239.7)	8.04	-	+FL090	-	RNAV 1	
TF	PR640	-	413553.07N 0083519.79W	244 (240.7)	18.23	-	+FL070	-	RNAV 1	
TF	ADNOV	-	413105.68N 0084511.39W	240 (237.2)	8.82	-	+4000ft	-	RNAV 1	
<b>Porto STAR RNAV 1 RWY 17 – ELGIX 2T</b>										
IF	ELGIX	-	413116.35N 0074022.55W	-	-	-	+FL110	-	RNAV 1	Clearance limit: ADNOV 4000ft
TF	VASIP	-	413317.92N 0082234.08W	277 (273.9)	31.75	-	+FL080	-	RNAV 1	
TF	PR650	-	413301.38N 0082630.74W	268 (264.7)	2.97	Left	+FL070	-	RNAV 1	
TF	PR612	-	413215.21N 0083721.09W	268 (264.7)	8.18	-	+4000ft	-	RNAV 1	
TF	ADNOV	-	413105.68N 0084511.39W	262 (258.9)	6.00	Left	+4000ft	-	RNAV 1	
<b>Porto STAR RNAV 1 RWY 17 – ASMOV 2M</b>										
IF	ASMOV	-	405809.81N 0092049.33W	-	-	-	+FL110	-	RNAV 1	Clearance limit: ADNOV 4000ft
TF	RETMO	-	411340.07N 0090049.71W	047 (044.2)	21.65	-	+FL070	-	RNAV 1	
TF	PR611	-	412955.61N 0085301.40W	023 (019.8)	17.28	Left	+4000ft	-	RNAV 1	
TF	ADNOV	-	413105.68N 0084511.39W	082 (078.7)	6.00	Right	+4000ft	-	RNAV 1	
<b>Porto STAR RNAV 1 RWY 17 – MALIS 4T</b>										
IF	MALIS	-	415120.05N 0073617.21W	-	-	-	+FL110	-	RNAV 1	Clearance limit: ADNOV 4000ft
TF	VASIP	-	413317.92N 0082234.08W	246 (242.8)	39.07	-	+FL080	-	RNAV 1	
TF	PR650	-	413301.38N 0082630.74W	268 (264.7)	2.97	Right	+FL070	-	RNAV 1	
TF	PR612	-	413215.21N 0083721.09W	268 (264.7)	8.18	-	+4000ft	-	RNAV 1	
TF	ADNOV	-	413105.68N 0084511.39W	262 (258.9)	6.00	Left	+4000ft	-	RNAV 1	
<b>Porto STAR RNAV 1 RWY 17 – PESUL 3T</b>										
IF	PESUL	-	405255.32N 0080654.37W	-	-	-	+FL110	-	RNAV 1	Clearance limit: ADNOV 4000ft
TF	PR618	-	410705.95N 0081747.88W	333 (329.9)	16.39	-	+FL070	-	RNAV 1	
TF	PR612	-	413215.21N 0083721.09W	333 (329.7)	29.14	-	+4000ft	-	RNAV 1	
TF	ADNOV	-	413105.68N 0084511.39W	262 (258.9)	6.00	Left	+4000ft	-	RNAV 1	
<b>Porto STAR RNAV 1 RWY 17 – UBANI 2M</b>										
IF	UBANI	-	413328.27N 0091422.27W	-	-	-	+FL110	-	RNAV 1	Clearance limit: ADNOV 4000ft
TF	ADNOV	-	413105.68N 0084511.39W	099 (096.0)	22.04	-	+4000ft	-	RNAV 1	