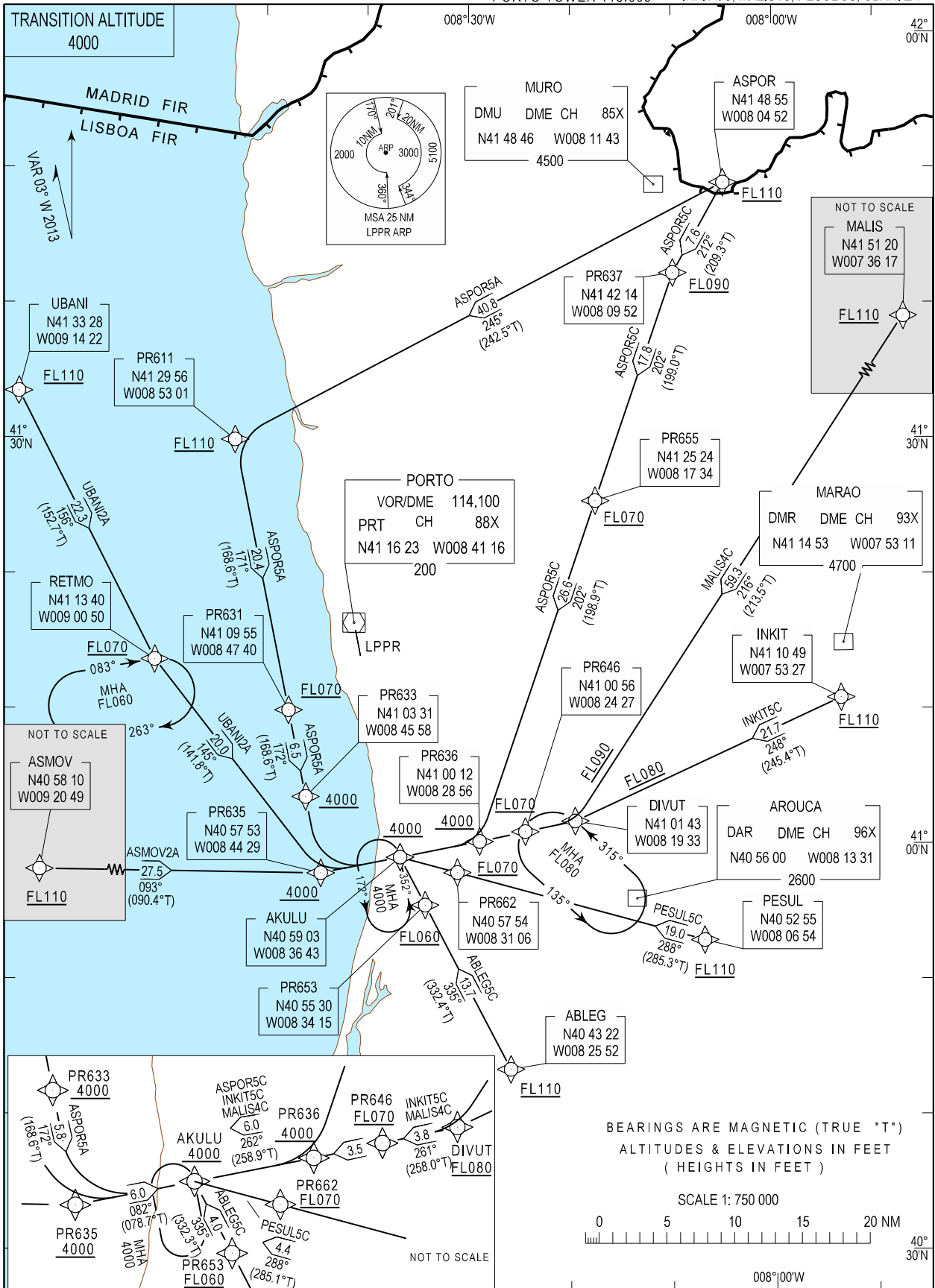


STANDARD ARRIVAL CHART - INSTRUMENT (STAR) - ICAO

PORTO INFORMATION 124.305
LISBOA CONTROL 132.305
PORTO APPROACH 121.105
PORTO TOWER 118.005

PORTO / LPPR
RNAV RWY35

ABLEG 5C, ASMOV 2A, ASPOR 5A, ASPOR 5C
INKIT 5C, MALIS4C, PESUL 5C, UBANI 2A



New DME DAR, DMR and DMU.

STAR Procedure Coding Table

Path Terminator	Waypoint			Course/Track MAG (True)	Dist NM	Turn Direction	Constraints		Nav Specs	Remarks
	Identifier	Flyover	Coordinates				Level	Speed		
Porto STAR RNAV 1 RWY 35 – ABLEG 5C										
IF	ABLEG	-	404321.57N 0082552.21W	-	-	-	+FL110	-	RNAV 1	Clearance limit: AKULU 4000ft
TF	PR653	-	405530.00N 0083415.13W	335 (332.4)	13.70	-	+FL060	-	RNAV 1	
TF	AKULU	-	405902.56N 0083642.55W	335 (332.3)	4.00	-	+4000ft	-	RNAV 1	
Porto STAR RNAV 1 RWY 35 – ASPOR 5A										
IF	ASPOR	-	414854.49N 0080452.32W	-	-	-	+FL110	-	RNAV 1	Clearance limit: AKULU 4000ft
TF	PR611	-	412955.61N 0085301.40W	245 (242.5)	40.78	-	+FL110	-	RNAV 1	
TF	PR631	-	410955.09N 0084740.45W	171 (168.6)	20.40	Left	+FL070	-	RNAV 1	
TF	PR633	-	410330.97N 0084558.39W	172 (168.6)	6.53	-	+4000ft	-	RNAV 1	
TF	PR635	-	405752.51N 0084428.75W	172 (168.6)	5.75	-	+4000ft	-	RNAV 1	
TF	AKULU	-	405902.56N 0083642.55W	082 (078.7)	6.00	Left	+4000ft	-	RNAV 1	
Porto STAR RNAV 1 RWY 35 – ASPOR 5C										
IF	ASPOR	-	414854.49N 0080452.32W	-	-	-	+FL110	-	RNAV 1	Clearance limit: AKULU 4000ft
TF	PR637	-	414214.34N 0080951.99W	212 (209.3)	7.64	-	+FL090	-	RNAV 1	
TF	PR655	-	412523.53N 0081733.63W	202 (199.0)	17.80	Left	+FL070	-	RNAV 1	
TF	PR636	-	410012.08N 0082856.07W	202 (198.9)	26.60	-	+4000ft	-	RNAV 1	
TF	AKULU	-	405902.56N 0083642.55W	262 (258.9)	6.00	Right	+4000ft	-	RNAV 1	
Porto STAR RNAV 1 RWY 35 – INKIT 5C										
IF	INKIT	-	411049.05N 0075326.91W	-	-	-	+FL110	-	RNAV 1	Clearance limit: AKULU 4000ft
TF	DIVUT	-	410142.79N 0081933.37W	248 (245.4)	21.73	-	+FL080	-	RNAV 1	
TF	PR646	-	410055.55N 0082427.11W	261 (258.0)	3.79	Right	+FL070	-	RNAV 1	
TF	PR636	-	410012.08N 0082856.07W	261 (258.0)	3.47	-	+4000ft	-	RNAV 1	
TF	AKULU	-	405902.56N 0083642.55W	262 (258.9)	6.00	-	+4000ft	-	RNAV 1	
Porto STAR RNAV 1 RWY 35 – ASMOV 2A										
IF	ASMOV	-	405809.81N 0092049.33W	-	-	-	+FL110	-	RNAV 1	Clearance limit: AKULU 4000ft
TF	PR635	-	405752.51N 0084428.75W	093 (090.4)	27.53	-	+4000ft	-	RNAV 1	
TF	AKULU	-	405902.56N 0083642.55W	082 (078.7)	6.00	Left	+4000ft	-	RNAV 1	
Porto STAR RNAV 1 RWY 35 – MALIS 4C										
IF	MALIS	-	415120.05N 0073617.22W	-	-	-	+FL110	-	RNAV 1	Clearance limit: AKULU 4000ft
TF	DIVUT	-	410142.79N 0081933.37W	216 (213.5)	59.32	-	+FL090	-	RNAV 1	
TF	PR646	-	410055.55N 0082427.11W	261 (258.0)	3.79	Right	+FL070	-	RNAV 1	
TF	PR636	-	410012.08N 0082856.07W	261 (258.0)	3.47	-	+4000ft	-	RNAV 1	
TF	AKULU	-	405902.56N 0083642.55W	262 (258.9)	6.00	-	+4000ft	-	RNAV 1	
Porto STAR RNAV 1 RWY 35 – PESUL 5C										
IF	PESUL	-	405255.32N 0080654.37W	-	-	-	+FL110	-	RNAV 1	Clearance limit: AKULU 4000ft
TF	PR662	-	405754.19N 0083106.37W	288 (285.3)	19.01	-	+FL070	-	RNAV 1	
TF	AKULU	-	405902.56N 0083642.55W	288 (285.1)	4.39	-	+4000ft	-	RNAV 1	
Porto STAR RNAV 1 RWY 35 – UBANI 2A										
IF	UBANI	-	413328.27N 0091422.27W	-	-	-	+FL110	-	RNAV 1	Clearance limit: AKULU 4000ft
TF	RETMO	-	411340.07N 0090049.71W	156 (152.7)	22.26	-	+FL070	-	RNAV 1	
TF	PR635	-	405752.51N 0084428.75W	145 (141.8)	20.05	Left	+4000ft	-	RNAV 1	
TF	AKULU	-	405902.56N 0083642.55W	082 (078.7)	6.00	Left	+4000ft	-	RNAV 1	