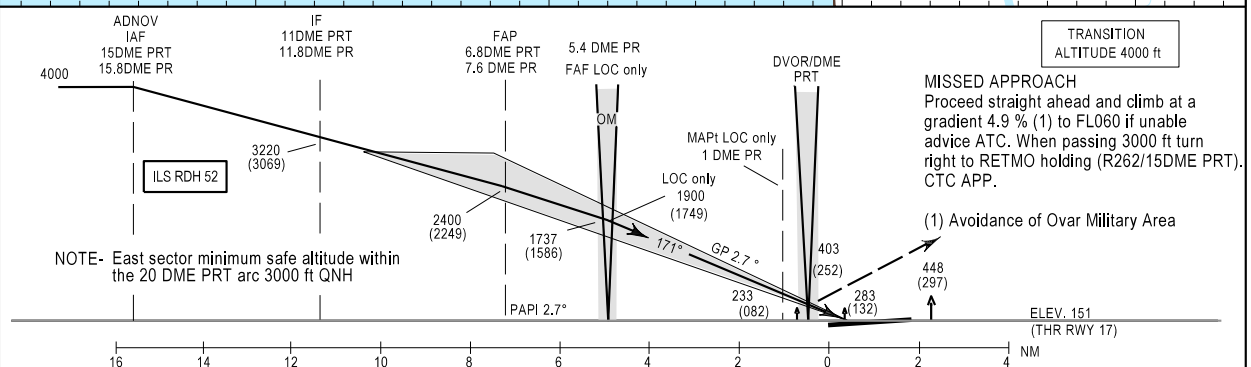
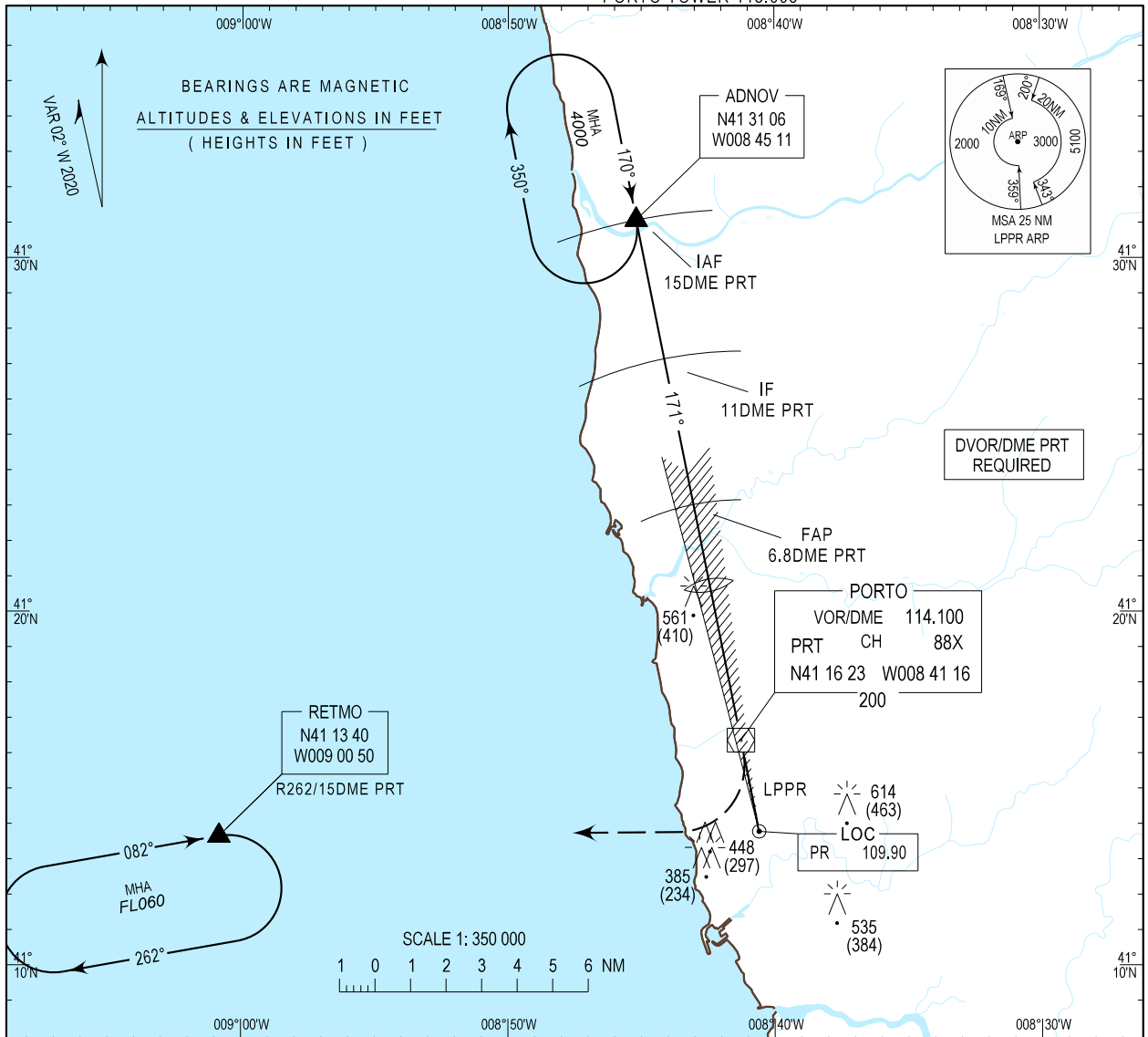


INSTRUMENT APPROACH CHART - ICAO AD ELEV 227 ft HEIGHTS RELATED THR RWY 17 - ELEV 151 ft

PORTO, Francisco Sá Carneiro (LPPR) ILS RWY17 CAT C-D

PORTO ARR INFORMATION 124.305
PORTO APPROACH 120.910
PORTO TOWER 118.005



OCA (H)		
CAT of ACFT	CAT C	CAT D
ILS	CAT I	351 (200)
	CAT II	251 (100)
	LOC only	590 (440)
CIRCLING	EASTRWY17/35	1280
	WESTRWY17/35	950

DME READING REFERS TO THE THR RWY 17								
DME PR	5	4	3	2				
ALTITUDE	1776	1461	1146	831				
LOC only								
Speed	kt	80	100	120	140	160	180	200
MAPt(4.4NM)	min : s	3:18	2:38	2:12	1:53	1:39	1:28	1:19
Rate of descent(5.2%)	ft / min	420	525	630	735	840	945	1050

MISSED APPROACH
Proceed straight ahead and climb at a gradient 4.9 % (1) to FLO60 if unable advice ATC. When passing 3000 ft turn right to RETMO holding (R262/15DME PRT). CTC APP.

(1) Avoidance of Ovar Military Area

AD name inserted, new ATIS FREQ.

THIS PAGE INTENTIONALLY LEFT BLANK