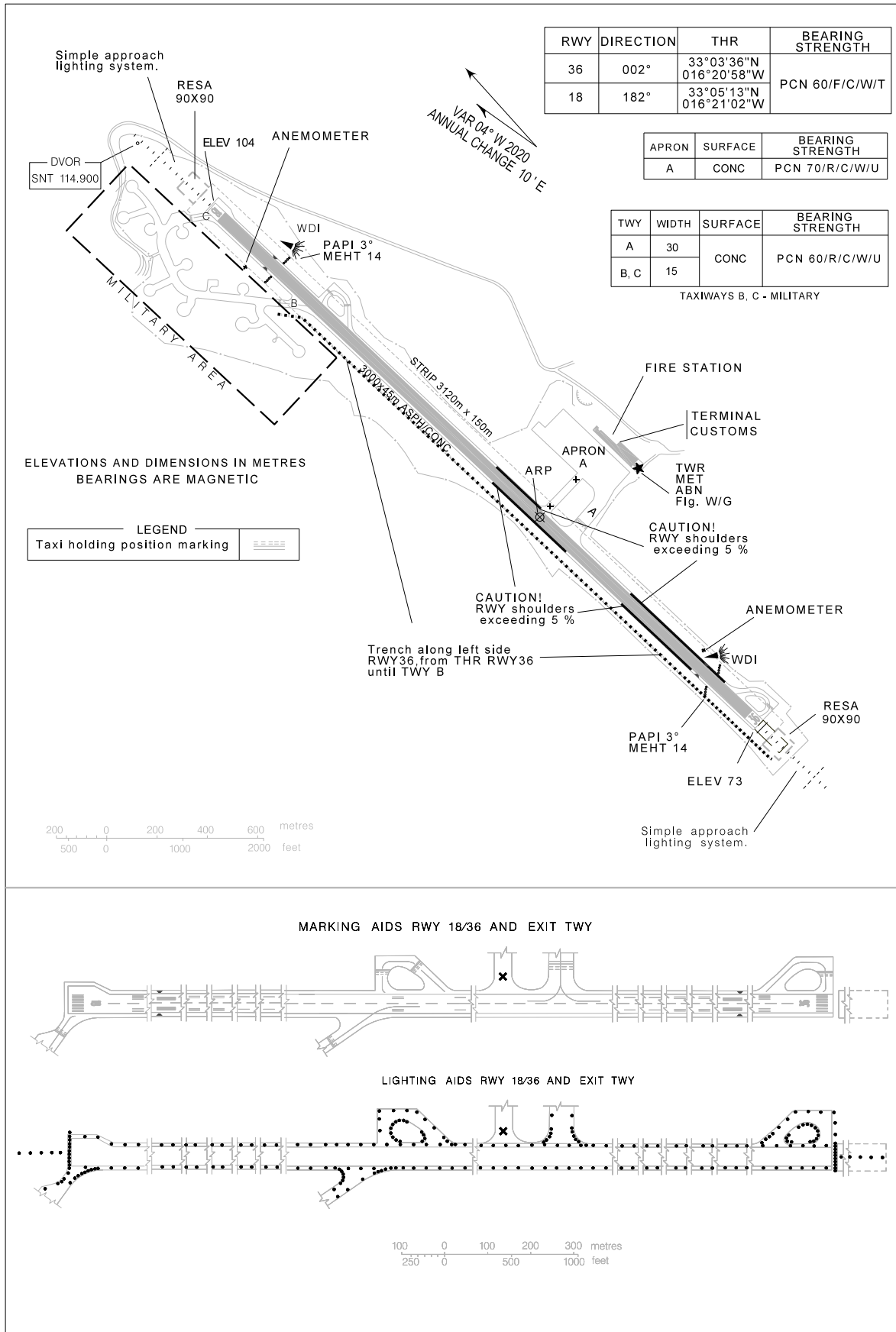
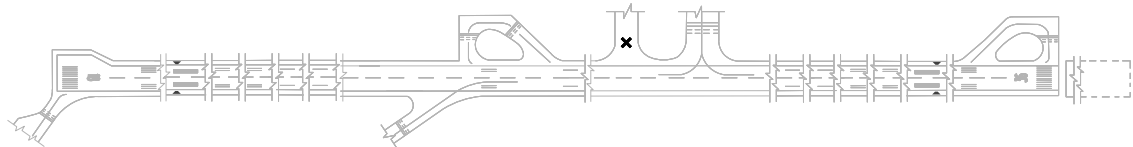


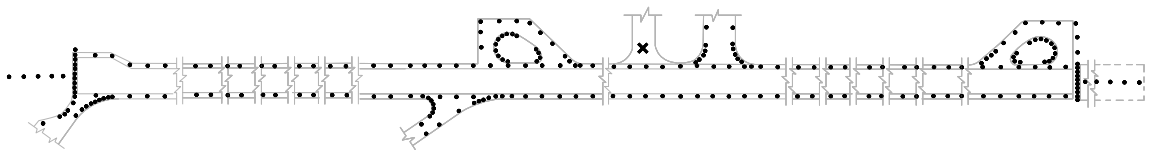
AERODROME CHART - ICAO 33 04 15 N PORTO SANTO TOWER 120.055 PORTO SANTO
016 20 59 W ELEV 104 m LPPS
ELEV 104 m



MARKING AIDS RWY 18/36 AND EXIT TWY



LIGHTING AIDS RWY 18/36 AND EXIT TWY



100 0 100 200 300 metres
250 0 500 1000 feet

New MAG DEC.

THIS PAGE INTENTIONALLY LEFT BLANK