

STANDARD DEPARTURE CHART -
INSTRUMENT (SID) - ICAO

PORTO SANTO TOWER 120.055
MADEIRA APPROACH 119.605

PORTO SANTO / LPPR
RWY18

ABUSU 8S, DEGUN 8S, LIDRO 8S
NIKAV 8S, NIKAV 8V, RAKUN 8S, TABOM 8S

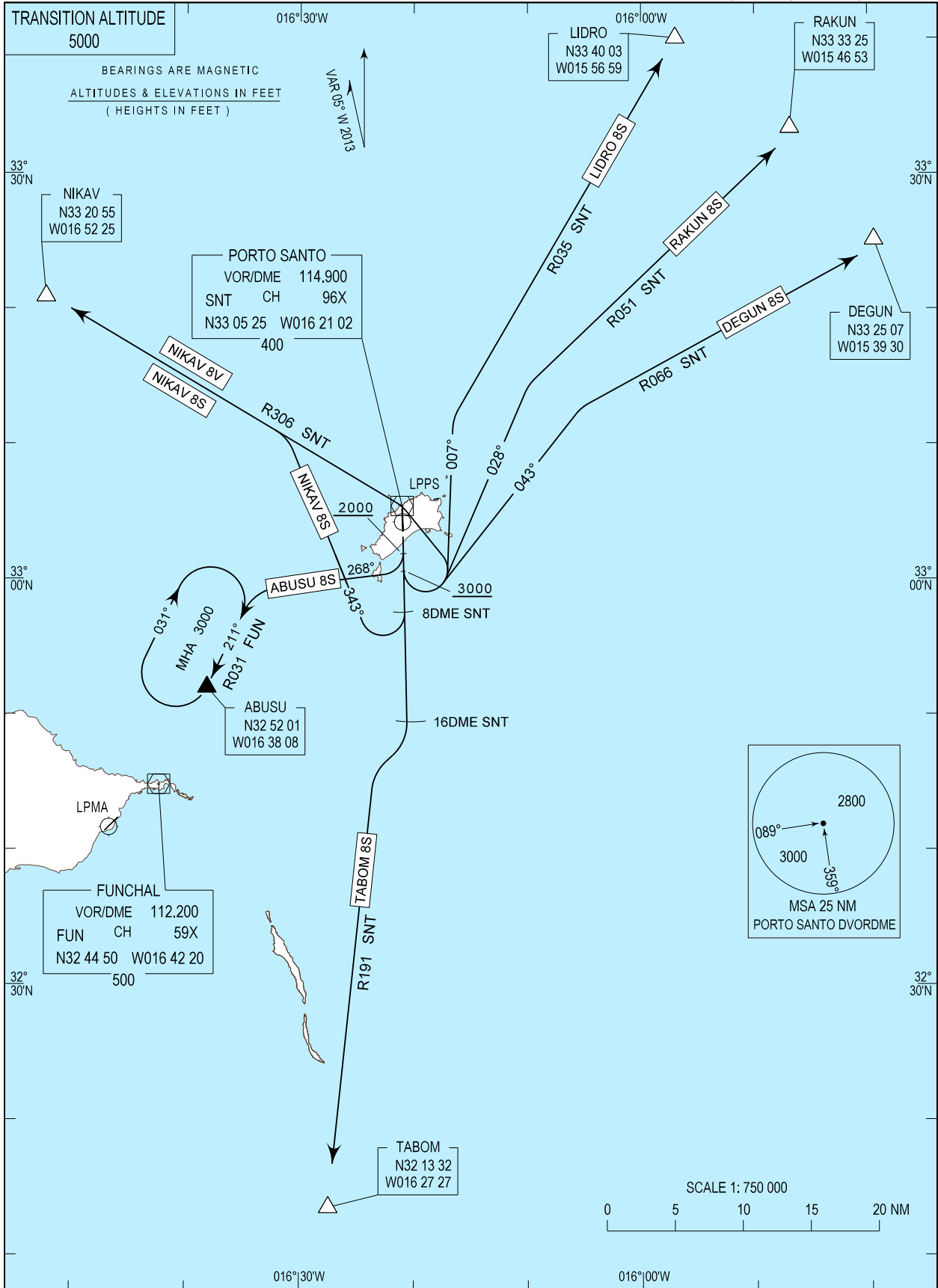


Chart redrawn.

STANDARD INSTRUMENT DEPARTURE (SID) RWY 18

RUNWAY 18				
Designator	Route	After Take-off		Remarks
		Climb to ALT / FL	Contact	
ABUSU8S	Climb straight ahead; at 2000ft QNH turn right to MAG Track 268 intercept and proceed on RDL031 FUN DVOR/DME to Holding ABUSU	FL060	Madeira Approach 119.605 MHZ	
DEGUN8S	Climb straight ahead; above 3000FT QNH turn left to MAG Track 043 to intercept and proceed on RDL066 SNT DVOR/DME to DEGUN	FL060		
LIDRO8S	Climb straight ahead; above 3000FT QNH turn left to MAG Track007 to intercept and proceed on RDL035 SNT DVOR/DME to LIDRO	FL060		To be used pending traffic conditions
NIKAV8V	Climb straight ahead; at 3000FT QNH turn left to SNT DVOR/DME, intercept and proceed on RDL306 SNT DVOR/DME to NIKAV	FL060		Alternative to NIKAV8S
NIKAV8S	Climb straight ahead; at 8NM SNT DVOR/DME or at 2000FT QNH, turn right to MAG Track 343 to intercept and proceed on RDL306 SNT DVOR/DME to NIKAV	FL060		
RAKUN8S	Climb straight ahead; above 3000FT QNH turn left to MAG Track 028 to intercept and proceed on RDL051 SNT DVOR/DME to RAKUN	FL060		To be used pending traffic conditions
TABOM8S	Climb straight ahead; at 16NM SNT DVOR/DME turn right to intercept and proceed on RDL191 SNT DVOR/DME to TABOM	FL060		