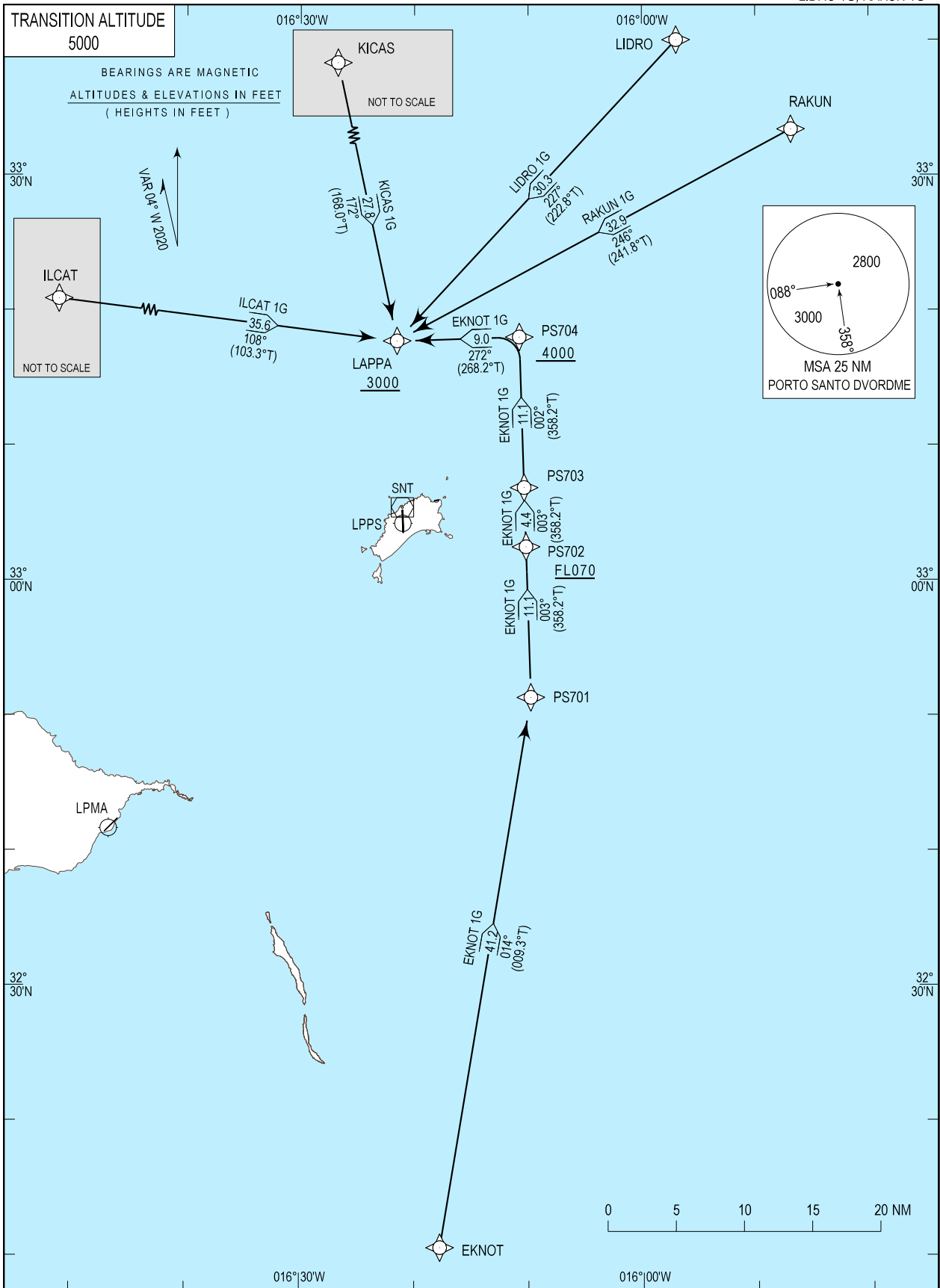


STANDARD ARRIVAL CHART -  
INSTRUMENT (STAR) - ICAO

MADEIRA APPROACH 119.605  
PORTO SANTO TOWER 120.055

PORTO SANTO / LPPS  
RNAV Rwy 18  
EKNOT 1G, ILCAT 1G, KICAS 1G  
LIDRO 1G, RAKUN 1G



Procedure identification correction.

STAR Procedure Coding Table										
Path Terminator	Waypoint			Course/Track MAG (True)	Dist NM	Turn Direction	Constraints		Navigation Specificatin	Remarks
	Identifier	Flyover	Coordinates				Level	Speed		
<b>PORTO SANTO RNAV1 EKNOT1G RWY18</b>										
IF	EKNOT	N	321035.26N 0161744.50W	-	-	-	-	-	RNAV1	Clearance Limit: LAPPA
TF	PS701	N	325121.06N 0160947.47W	014 (009.3)	41.23	-	-	-	RNAV1	
TF	PS702	N	330230.19N 0161012.43W	003 (358.2)	11.14	-	+FL70	-	RNAV1	
TF	PS703	N	330653.28N 0161022.27W	003 (358.2)	4.38	-	-	-	RNAV1	
TF	PS704	N	331802.42N 0161047.36W	002 (358.2)	11.14	-	+4000FT	-	RNAV1	
TF	LAPPA	N	331744.85N 0162131.41W	272 (268.2)	9.00	-	+3000FT	-	RNAV1	
<b>PORTO SANTO RNAV1 ILCAT1G RWY18</b>										
IF	ILCAT	N	332602.99N 0170254.37W	-	-	-	-	-	RNAV1	Clearance Limit: LAPPA
TF	LAPPA	N	331744.85N 0162131.41W	108 (103.3)	35.64	-	+3000FT	-	RNAV1	
<b>PORTO SANTO STAR RNAV1 KICAS1G RWY18</b>										
IF	KICAS	N	334501.68N 0162824.45W	-	-	-	-	-	RNAV1	Clearance Limit: LAPPA
TF	LAPPA	N	331744.85N 0162131.41W	172 (168.0)	27.83	-	+3000FT	-	RNAV1	
<b>PORTO SANTO STAR RNAV1 LIDRO1G RWY18</b>										
IF	LIDRO	N	334002.64N 0155658.55W	-	-	-	-	-	RNAV1	Clearance Limit: LAPPA
TF	LAPPA	N	331744.85N 0162131.41W	227 (222.8)	30.28	-	+3000FT	-	RNAV1	
<b>PORTO SANTO RNAV1 RAKUN1G RWY18</b>										
IF	RAKUN	N	333325.01N 0154652.55W	-	-	-	-	-	RNAV1	Clearance Limit: LAPPA
TF	LAPPA	N	331744.85N 0162131.41W	246 (241.8)	32.95	-	+3000FT	-	RNAV1	