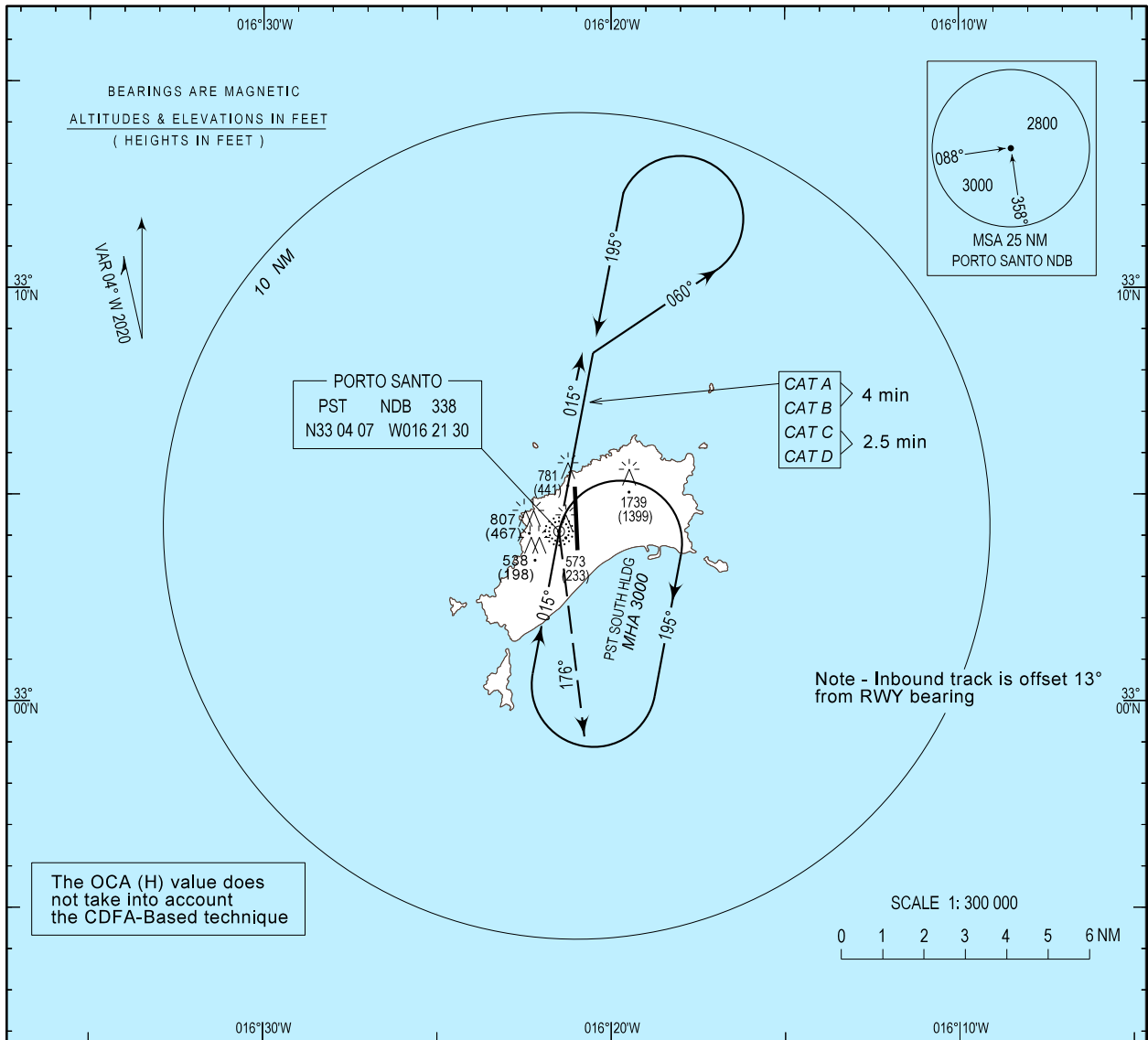


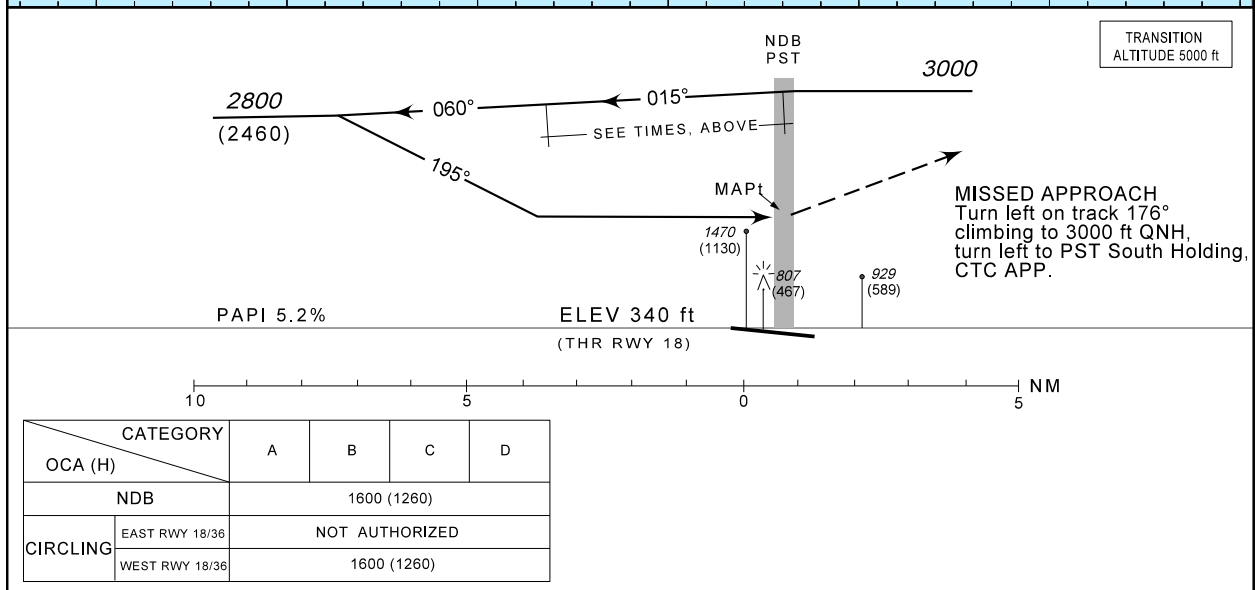
INSTRUMENT APPROACH CHART - ICAO  
AD ELEV 340 ft  
HEIGHTS RELATED  
THR RWY 18 - ELEV 340 ft

MADEIRA APPROACH 119.605  
PORTO SANTO TOWER 120.055

PORTO SANTO / LPPS  
NDB  
RWY18



The OCA (H) value does not take into account the CDFA-Based technique



CATEGORY		A	B	C	D
CIRCLING	OCA (H)				
	NDB	1600 (1260)			
CIRCLING	EAST RWY 18/36	NOT AUTHORIZED			
	WEST RWY 18/36	1600 (1260)			

New MAG DEC.

THIS PAGE INTENTIONALLY LEFT BLANK