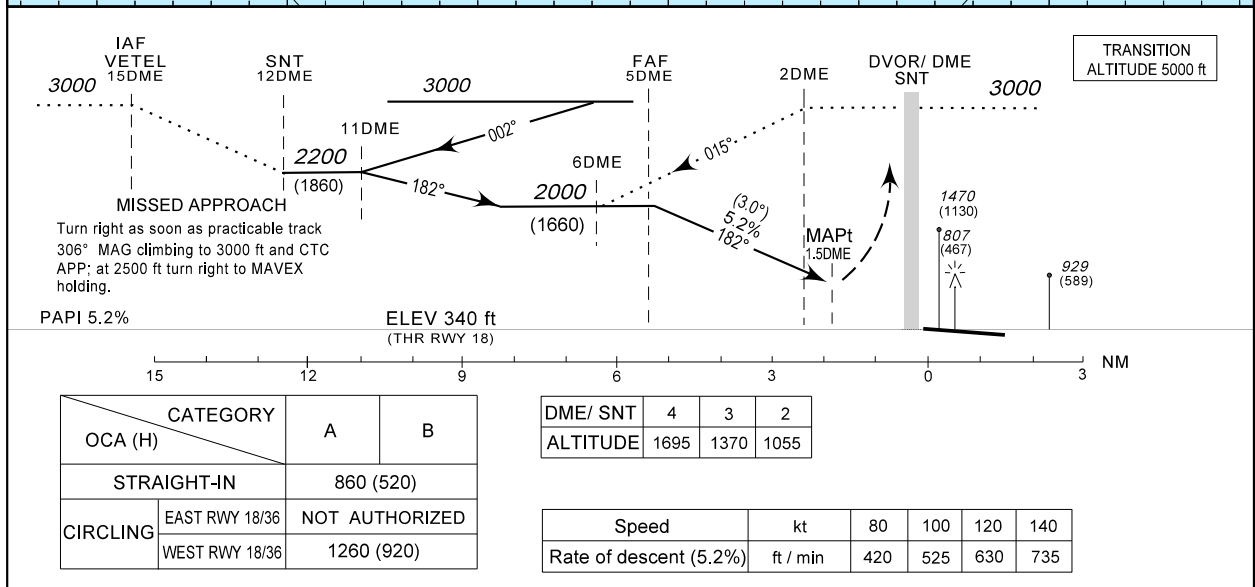
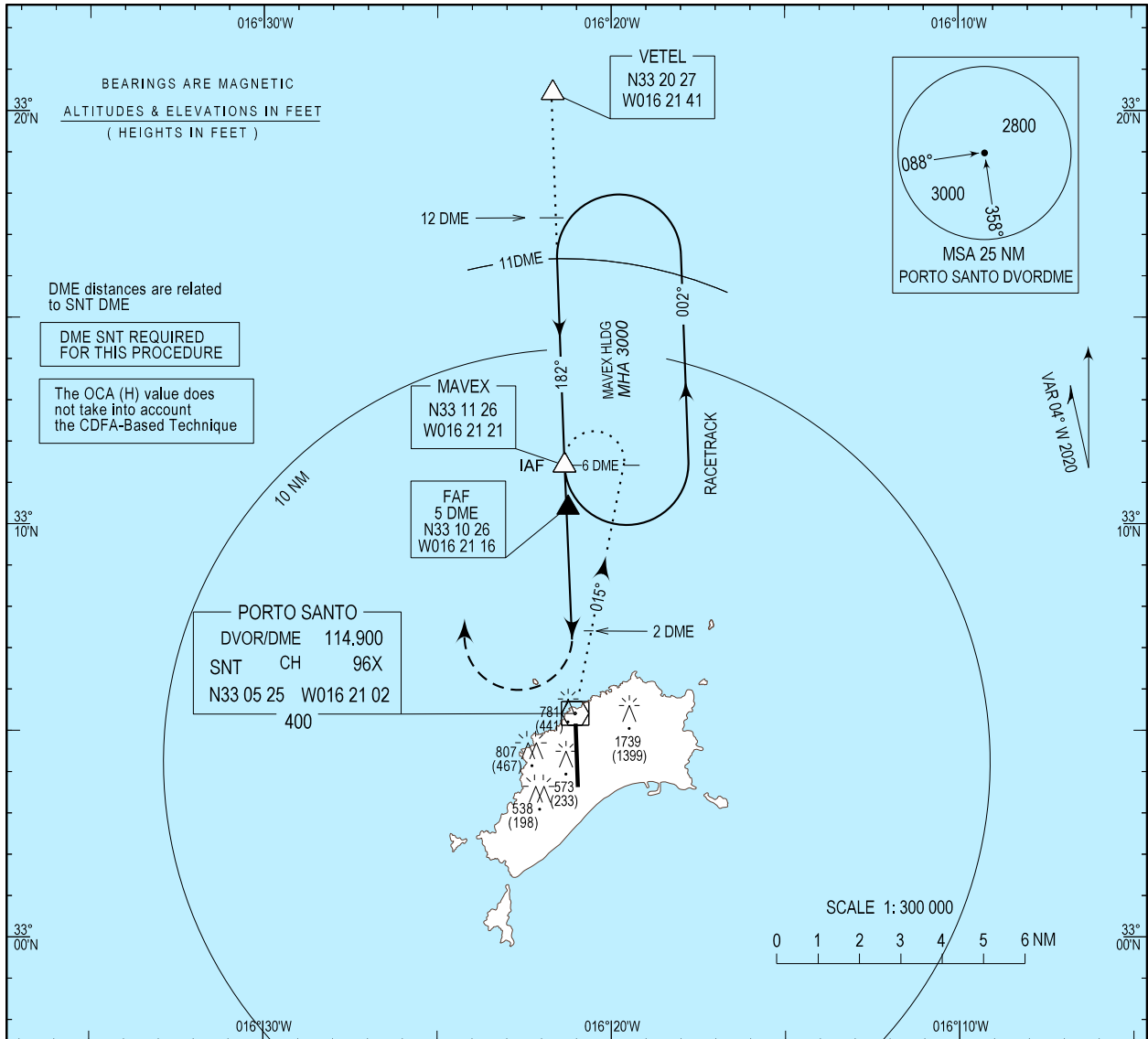


INSTRUMENT APPROACH CHART - ICAO

AD ELEV 340 ft  
HEIGHTS RELATED THR RWY 18 - ELEV 340 ft

MADEIRA APPROACH 119.605  
PORTO SANTO TOWER 120.055

PORTO SANTO / LPPS  
Dvor  
RWY18  
CAT A-B



CATEGORY	A	B
	OCA (H)	
STRAIGHT-IN	860 (520)	
CIRCLING	NOT AUTHORIZED	
	EAST RWY 18/36	1260 (920)

DME/ SNT	4	3	2
ALTITUDE	1695	1370	1055

Speed	kt	80	100	120	140
Rate of descent (5.2%)	ft / min	420	525	630	735

FAF COORD corrected.

THIS PAGE INTENTIONALLY LEFT BLANK