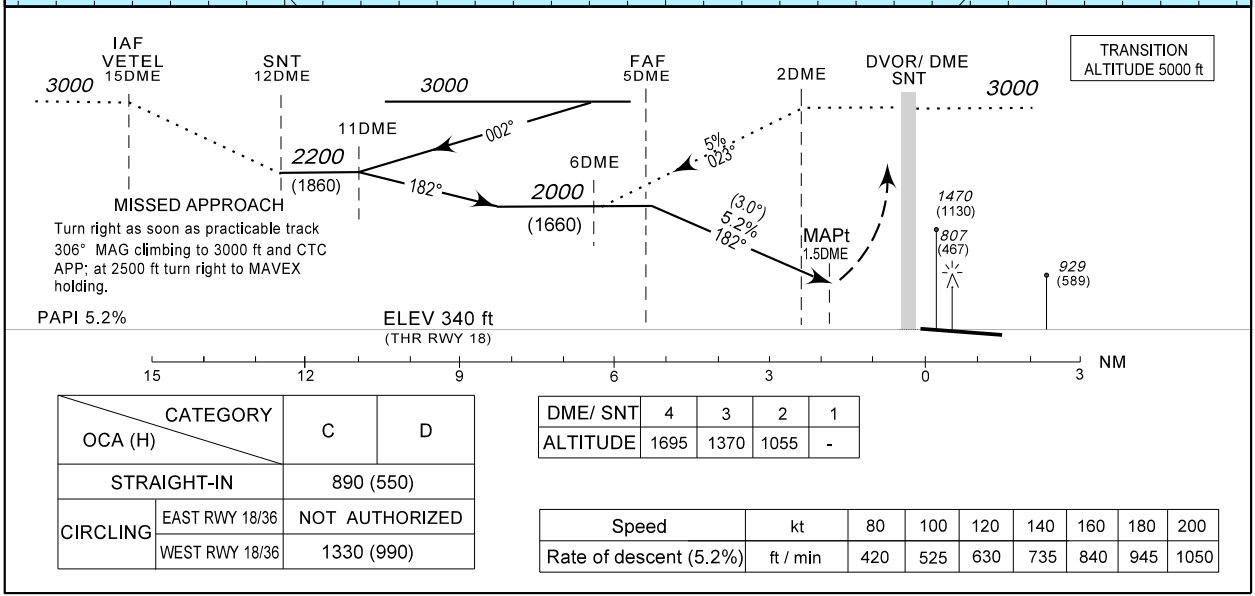
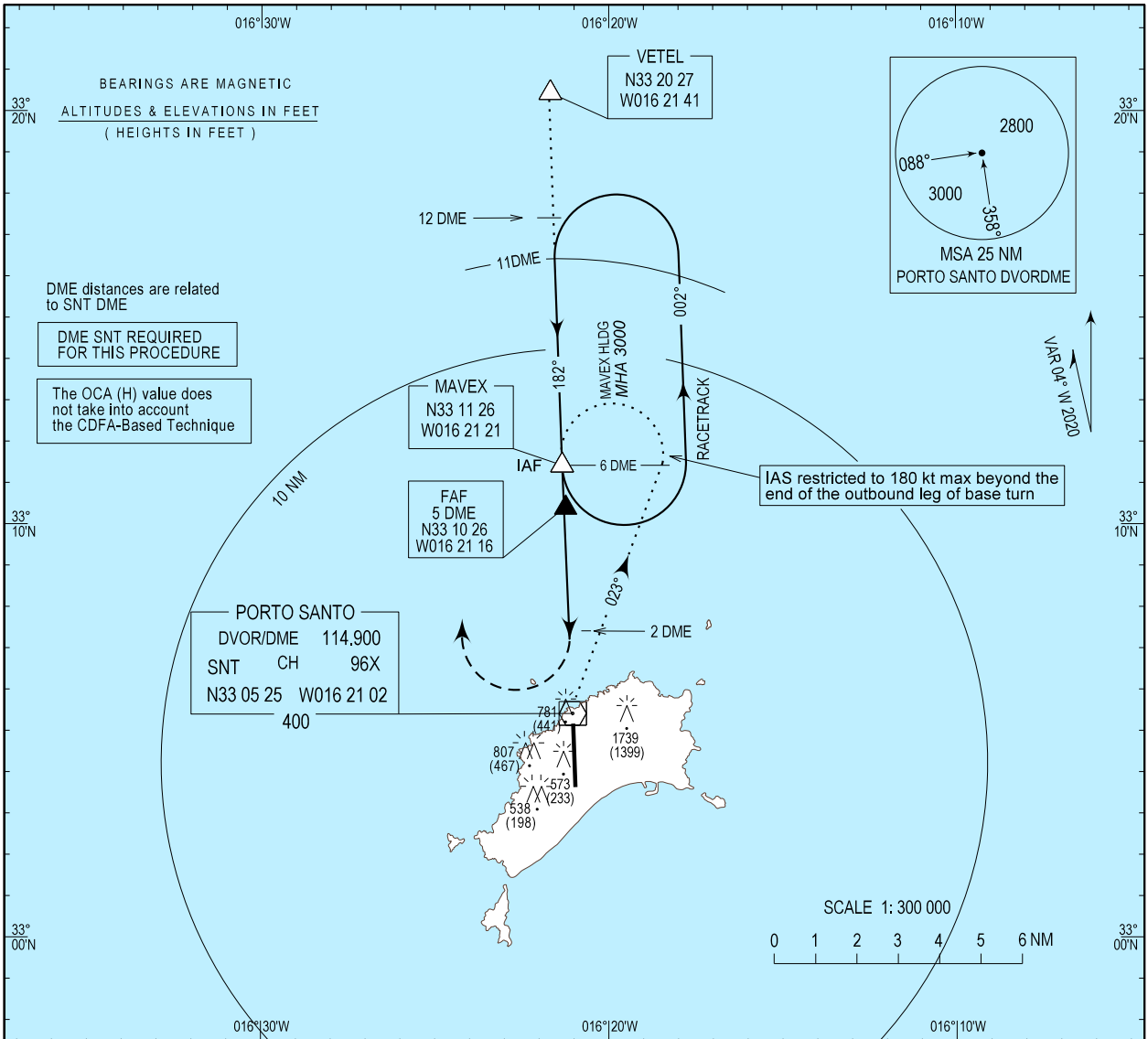


INSTRUMENT APPROACH CHART - ICAO
AD ELEV 340 ft
HEIGHTS RELATED THR RWY 18 - ELEV 340 ft

MADEIRA APPROACH 119.605
PORTO SANTO TOWER 120.055

PORTO SANTO / LPSS
DVOR
RWY18
CAT C-D



OCA (H)	CATEGORY	
	C	D
STRAIGHT-IN	890 (550)	
CIRCLING	EAST RWY 18/36	NOT AUTHORIZED
	WEST RWY 18/36	1330 (990)

DME/ SNT	4	3	2	1
ALTITUDE	1695	1370	1055	-

Speed	kt	80	100	120	140	160	180	200
Rate of descent (5.2%)	ft / min	420	525	630	735	840	945	1050

FAF COORD corrected.

THIS PAGE INTENTIONALLY LEFT BLANK