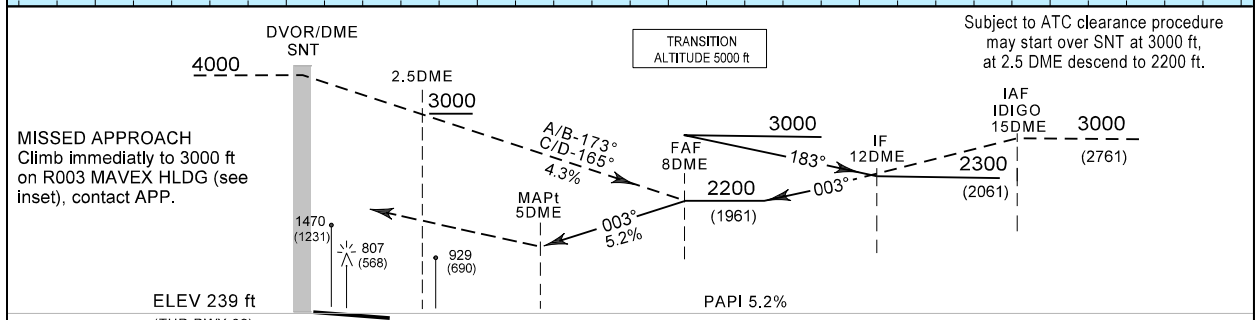
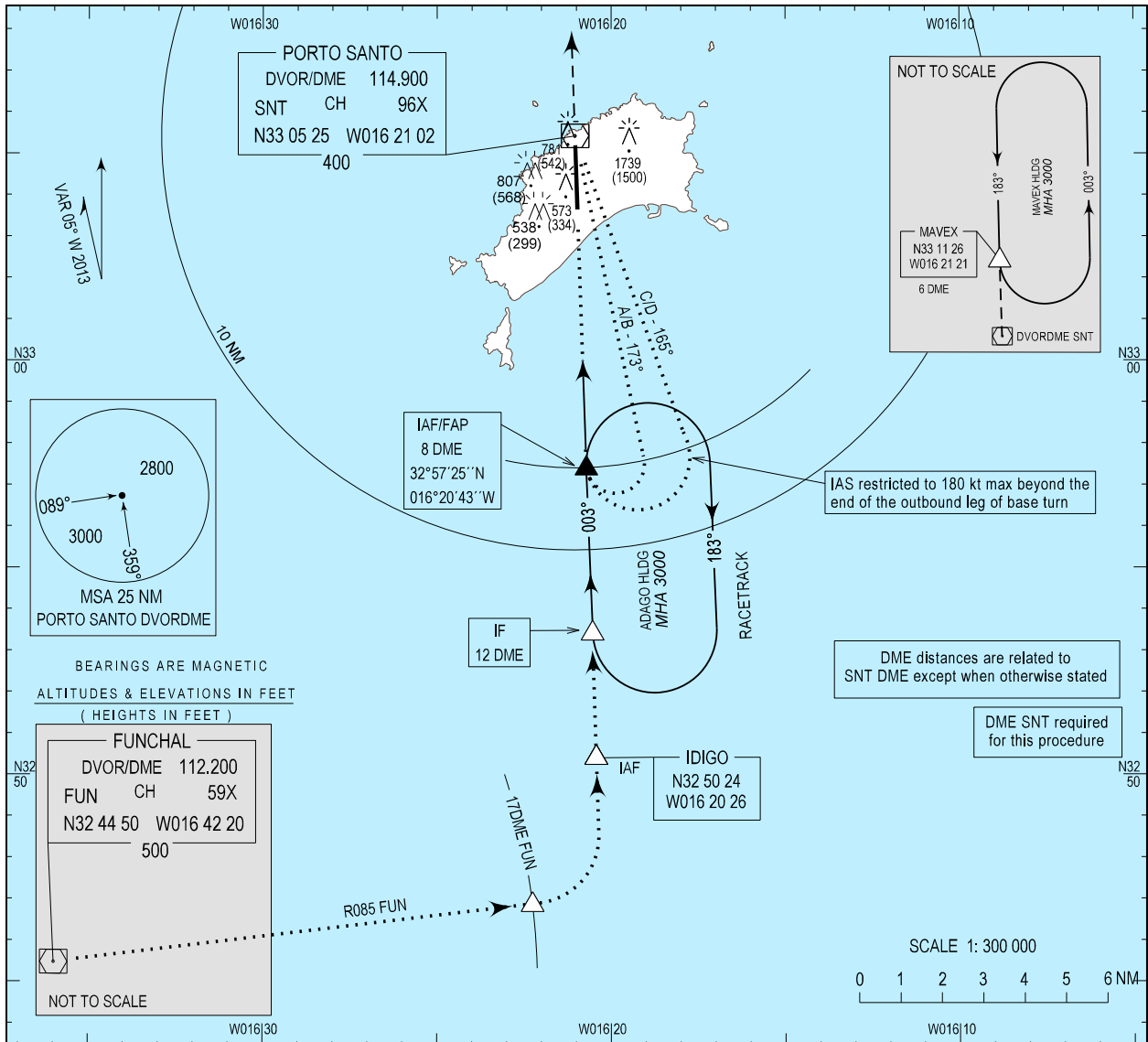


**INSTRUMENT
APPROACH
CHART - ICAO**

AD ELEV 340 ft
HEIGHTS RELATED
THR RWY 36 - ELEV 239 ft

MADEIRA APPROACH 119.605
PORTO SANTO TOWER 120.055

PORTO SANTO / LPPS
DVOR
RWY36



Subject to ATC clearance procedure may start over SNT at 3000 ft, at 2.5 DME descend to 2200 ft.

CATEGORY	A-B	C-D
	OCA (H)	
STRAIGHT-IN	1260 (1021)	
CIRCLING	NOT AUTHORIZED	
	EAST RWY 18/36	1260 (920)
	WEST RWY 18/36	1330 (990)

DME/SNT	7	6	5	4	3
ALTITUDE	1885	1570	-	-	-

Speed	kt	80	100	120	140	160	180	200
Rate of descent (5.2%)	ft / min	420	525	630	735	840	945	1050

New CS and FREQ.