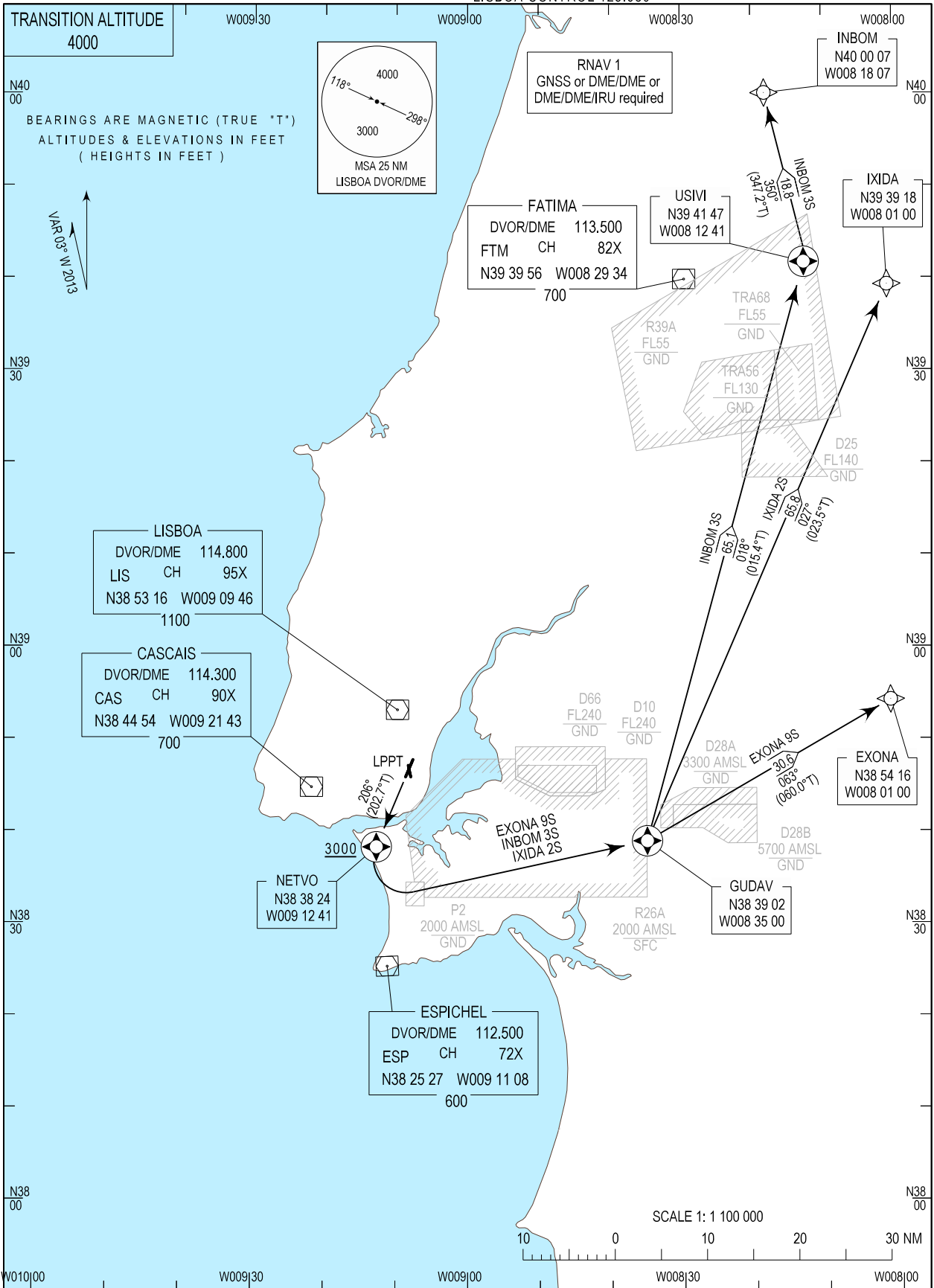


STANDARD DEPARTURE CHART - INSTRUMENT (SID) - ICAO

LISBOA DEP INFORMATION 121.955  
LISBOA TOWER 118.105  
LISBOA APPROACH 119.105  
LISBOA CONTROL 123.980

LISBOA / LPPT  
RNAV RWY21  
EXONA 9S, INBOM 3S, IXIDA 2S



New TRA68.

| SID Procedure Coding Table          |            |         |                           |                         |         |                |             |       |           |         |
|-------------------------------------|------------|---------|---------------------------|-------------------------|---------|----------------|-------------|-------|-----------|---------|
| Lisboa SID RNAV 1 RWY 21 - EXONA 9S |            |         |                           |                         |         |                |             |       |           |         |
| Path Terminator                     | Waypoint   |         |                           | Course/Track MAG (True) | Dist NM | Turn Direction | Constraints |       | Nav Specs | Remarks |
|                                     | Identifier | Flyover | Coordinates               |                         |         |                | Level       | Speed |           |         |
| CF                                  | NETVO      | Yes     | 383824.16N<br>0091241.03W | 206 (202.7)             | -       | -              | +3000       | -     | RNAV 1    | -       |
| DF                                  | GUDAV      | Yes     | 383901.57N<br>0083500.25W | -                       | -       | Left           | -           | -     | RNAV 1    |         |
| TF                                  | EXONA      | -       | 385415.89N<br>0080100.00W | 063 (060.0)             | 30.64   | Left           | -           | -     | RNAV 1    |         |

| Designator | Route   | After Take-off  |  | Remarks   |
|------------|---|-----------------|--|---|
|            |   | Climb to ALT/FL | Contact  |   |
| EXONA9S    | Climb straight ahead to NETVO. Turn left to GUDAV- EXONA. | FL060           | LISBOA APPROACH. When passing 1000ft QNH mentioning only the call sign and passing altitude. 119.105 MHz as announced by ATIS departure. | Above FL245 to UREDI and OGERO. Below FL245 to PORTA. |

| SID Procedure Coding Table          |            |         |                           |                         |         |                |             |       |           |         |
|-------------------------------------|------------|---------|---------------------------|-------------------------|---------|----------------|-------------|-------|-----------|---------|
| Lisboa SID RNAV 1 RWY 21 - INBOM 3S |            |         |                           |                         |         |                |             |       |           |         |
| Path Terminator                     | Waypoint   |         |                           | Course/Track MAG (True) | Dist NM | Turn Direction | Constraints |       | Nav Specs | Remarks |
|                                     | Identifier | Flyover | Coordinates               |                         |         |                | Level       | Speed |           |         |
| CF                                  | NETVO      | Yes     | 383824.16N<br>0091241.03W | 206 (202.7)             | -       | -              | +3000       | -     | RNAV 1    | -       |
| DF                                  | GUDAV      | Yes     | 383901.57N<br>0083500.25W | -                       | -       | Left           | -           | -     | RNAV 1    |         |
| TF                                  | USIVI      | Yes     | 394147.14N<br>0081241.32W | 018 (015.35)            | 65.06   | -              | -           | -     | RNAV 1    |         |
| TF                                  | INBOM      | -       | 400006.91N<br>0081807.21W | 350 (347.2)             | 18.79   | Left           | -           | -     | RNAV 1    |         |

| Designator | Route   | After Take-off  |  | Remarks |
|------------|---|-----------------|--|---------|
|            |   | Climb to ALT/FL | Contact  |         |
| INBOM3S    | Climb straight ahead to NETVO. Turn left to GUDAV - USIVI- INBOM. | FL060           | LISBOA APPROACH. When passing 1000ft QNH mentioning only the call sign and passing altitude. 119.105 MHz as announced by ATIS departure. | -       |

| SID Procedure Coding Table          |            |         |                           |                         |         |                |             |       |           |         |
|-------------------------------------|------------|---------|---------------------------|-------------------------|---------|----------------|-------------|-------|-----------|---------|
| Lisboa SID RNAV 1 RWY 21 - IXIDA 2S |            |         |                           |                         |         |                |             |       |           |         |
| Path Terminator                     | Waypoint   |         |                           | Course/Track MAG (True) | Dist NM | Turn Direction | Constraints |       | Nav Specs | Remarks |
|                                     | Identifier | Flyover | Coordinates               |                         |         |                | Level       | Speed |           |         |
| CF                                  | NETVO      | Yes     | 383824.16N<br>0091241.03W | 206 (202.7)             | -       | -              | +3000       | -     | RNAV 1    | -       |
| DF                                  | GUDAV      | Yes     | 383901.57N<br>0083500.25W | -                       | -       | Left           | -           | -     | RNAV 1    |         |
| TF                                  | IXIDA      | -       | 393918.46N<br>0080100.00W | 027 (023.5)             | 65.78   | Left           | -           | -     | RNAV 1    |         |

| Designator | Route   | After Take-off  |  | Remarks                                     |
|------------|---|-----------------|--|---|
|            |   | Climb to ALT/FL | Contact  |   |
| IXIDA2S    | Climb straight ahead to NETVO. Turn left to GUDAV- IXIDA. | FL060           | LISBOA APPROACH. When passing 1000ft QNH mentioning only the call sign and passing altitude. 119.105 MHz as announced by ATIS departure. | Above FL245 to TOSDI. Below FL245 to RIVRO. |