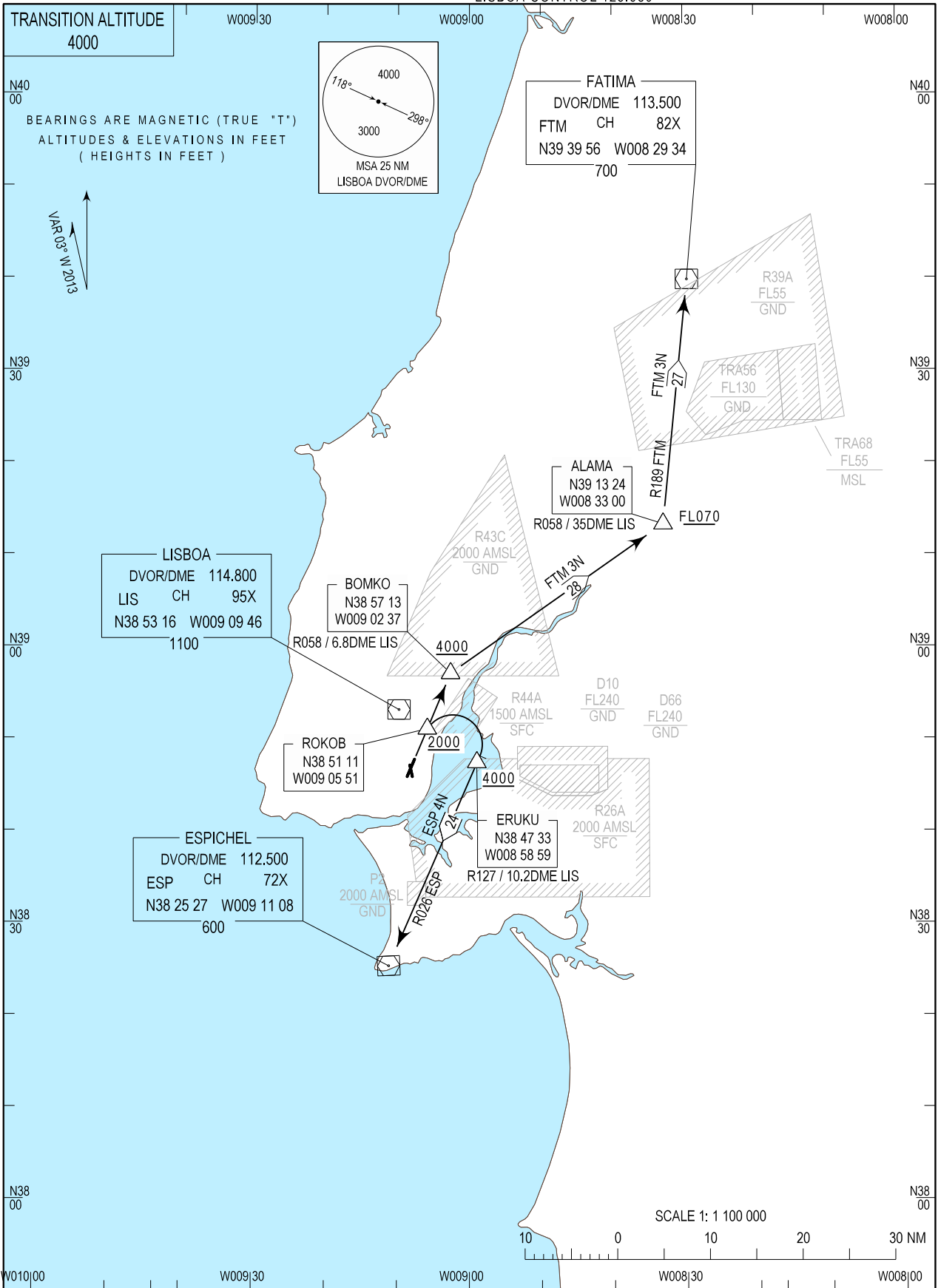


STANDARD DEPARTURE CHART -  
INSTRUMENT (SID) - ICAO

LISBOA DEP INFORMATION 121.955  
LISBOA TOWER 118.105  
LISBOA APPROACH 119.105  
LISBOA CONTROL 123.980

LISBOA / LPPT  
RWY03/35  
ESP 4N, FTM 3N



ROKOB altitude restriction changed.

STANDARD INSTRUMENT DEPARTURE (SID) RWY 03/35

Designator	Route	After Take-off		Remarks
		Climb to ALT/FL	Contact	
ESP4N	Climb straight ahead to position ROKOB (RDL127 3.7 NM LIS DVOR/DME +2000 ft). Turn right to intercept and proceed on RDL 127 LIS to position ERUKU (RDL127 10.2 NM LIS DVOR/DME +4000 ft). Turn right to intercept and proceed on RDL 026 ESP to ESP DVOR/DME	FL060	LISBOA APPROACH. When passing 1000ft QNH mentioning only the call sign and passing altitude. 119.105 MHz as announced by ATIS departure.	-
FTM3N	Climb straight ahead to position ROKOB (RDL127 3.7 NM LIS DVOR/DME +2000 ft). Continue straight ahead to position BOMKO (RDL 058 6.8 NM LIS DVOR/DME +4000ft). Turn right to intercept and proceed on RDL 058 LIS to position ALAMA (RDL058 35.0 NM LIS DVOR/DME +FL070). Turn left to intercept and proceed on RDL 189 FTM to FTM DVOR/DME.	FL060	LISBOA APPROACH. When passing 1000ft QNH mentioning only the call sign and passing altitude. 119.105 MHz as announced by ATIS departure.	-