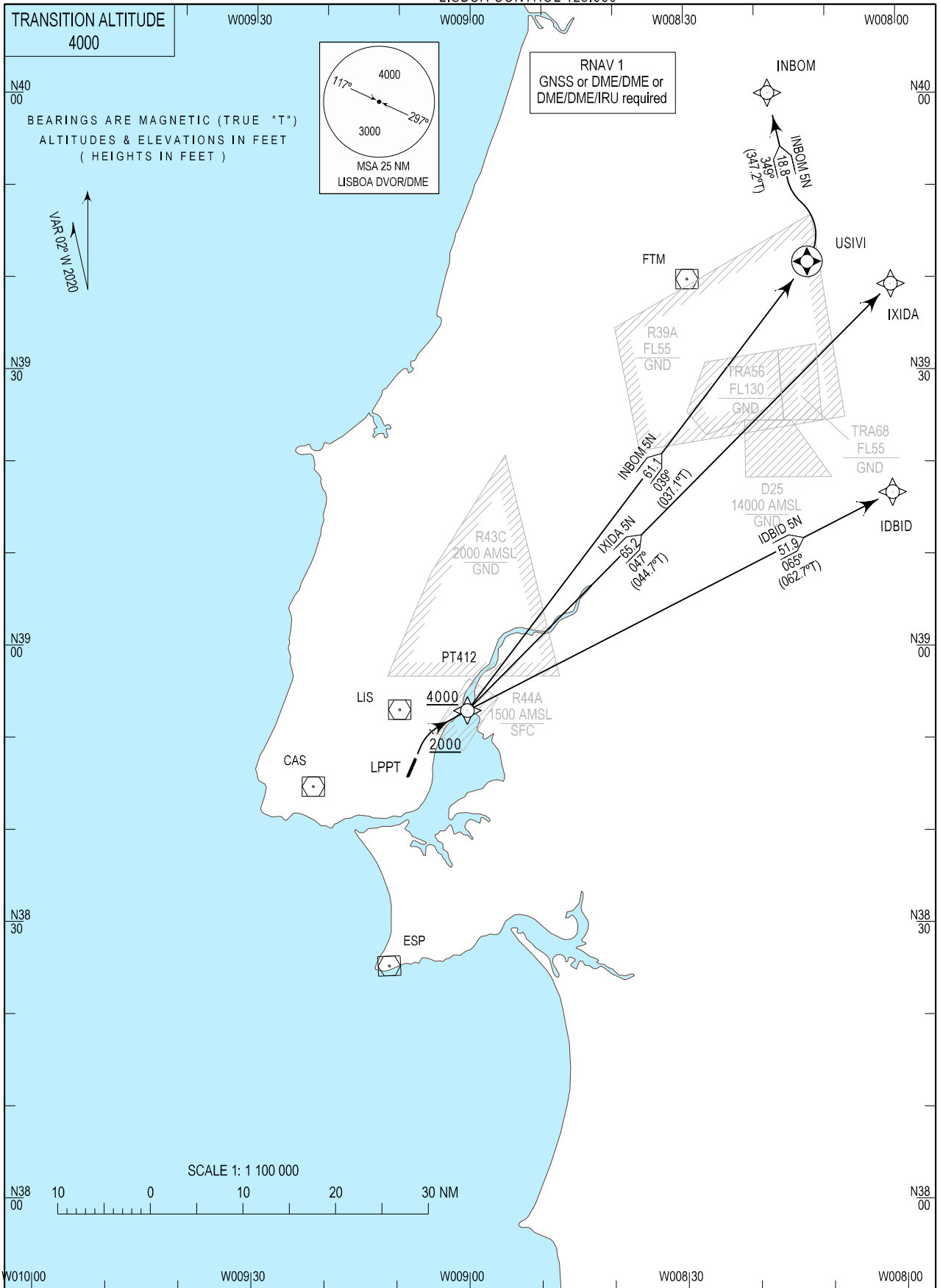


STANDARD DEPARTURE CHART -
INSTRUMENT (SID) - ICAO

LISBOA DEP INFORMATION 121.955
LISBOA TOWER 118.105
LISBOA APPROACH 119.105
LISBOA CONTROL 123.980

LISBOA, Humberto Delgado (LPPT)
RNAV RWY 02
IDBID 5N, INBOM 5N, IXIDA 5N



MAG VAR changed. New RWY designator.

SID Procedure Coding Table										
Lisboa SID RNAV 1 RWY 02 - IDBID 5N										
Path Terminator	Waypoint			Course/Track MAG (True)	Dist NM	Turn Direct	Constraints		Nav Specs	Remarks
	Identifier	Flyover	Coordinates				Level	Speed		
CA	-	-	-	025 (022.7)	-	-	+2000ft	-	RNAV 1	-
DF	PT412	-	385310.45N 0090022.60W	-	-	Right	+4000ft	-	RNAV 1	
TF	IDBID	-	391641.60N 0080100.00W	065 (062.7)	51.86	Right	-	-	RNAV 1	

Designator	Route	After Take-off		Remarks
		Climb to ALT/FL	Contact	
IDBID 5N	Climb straight ahead. At or above 2000ft QNH turn right to PT412- IDBID.	FL060	LISBOA APPROACH. When passing 1000ft QNH mentioning only the call sign and passing altitude. 119.105 MHz as announced by ATIS departure.	Above FL245 to UREDI and OGERO. Below FL245 to PORTA.

SID Procedure Coding Table										
Lisboa SID RNAV 1 RWY 02 - INBOM 5N										
Path Terminator	Waypoint			Course/Track MAG (True)	Dist NM	Turn Direction	Constraints		Nav Specs	Remarks
	Identifier	Flyover	Coordinates				Level	Speed		
CA	-	-	-	025 (022.7)	-	-	+2000ft	-	RNAV 1	-
DF	PT412	-	385310.45N 0090022.60W	-	-	Right	+4000ft	-	RNAV 1	
TF	USIVI	Yes	394147.14N 0081241.32W	039 (037.1)	61.07	-	-	-	RNAV 1	
TF	INBOM	-	400006.91N 0081807.21W	349 (347.2)	18,79	Left	-	-	RNAV 1	

Designator	Route	After Take-off		Remarks
		Climb to ALT/FL	Contact	
INBOM 5N	Climb straight ahead. At or above 2000ft QNH turn right to PT412- USIVI- INBOM.	FL060	LISBOA APPROACH. When passing 1000ft QNH mentioning only the call sign and passing altitude. 119.105 MHz as announced by ATIS departure.	-

SID Procedure Coding Table										
Lisboa SID RNAV 1 RWY 02 - IXIDA 5N										
Path Terminator	Waypoint			Course/Track MAG (True)	Dist NM	Turn Direction	Constraints		Nav Specs	Remarks
	Identifier	Flyover	Coordinates				Level	Speed		
CA	-	-	-	025 (022.7)	-	-	+2000ft	-	RNAV 1	-
DF	PT412	-	385310.45N 0090022.60W	-	-	Right	+4000ft	-	RNAV 1	
TF	IXIDA	-	393918.46N 0080100.00W	047 (044.7)	65.20	-	-	-	RNAV 1	

Designator	Route	After Take-off		Remarks
		Climb to ALT/FL	Contact	
IXIDA 5N	Climb straight ahead. At or above 2000ft QNH turn right to PT412- IXIDA.	FL060	LISBOA APPROACH. When passing 1000ft QNH mentioning only the call sign and passing altitude. 119.105 MHz as announced by ATIS departure.	Above FL245 to TOSDI. Below FL245 to RIVRO.