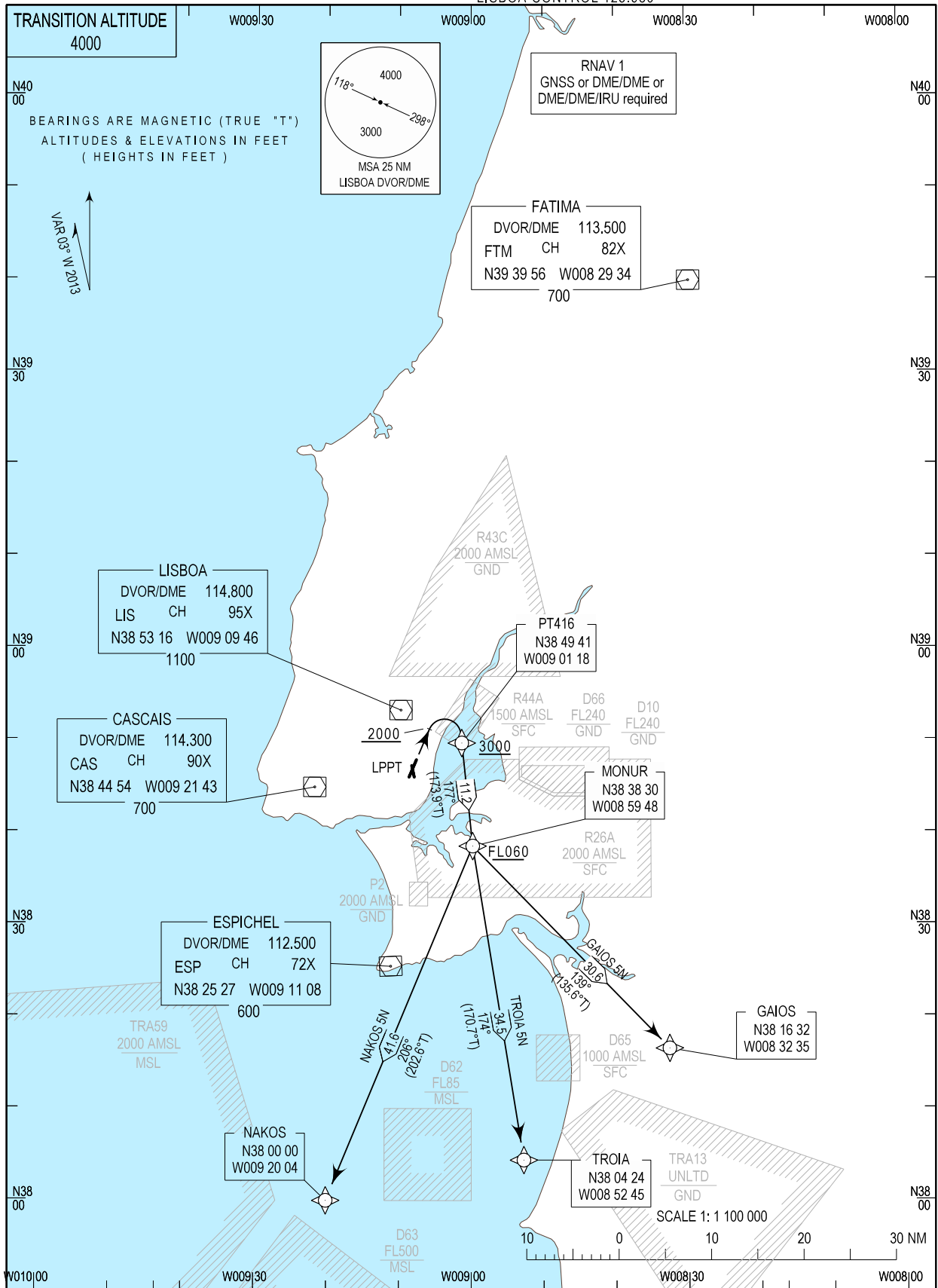


STANDARD DEPARTURE CHART -
INSTRUMENT (SID) - ICAO

LISBOA DEP INFORMATION 121.955
LISBOA TOWER 118.105
LISBOA APPROACH 119.105
LISBOA CONTROL 123.980

LISBOA / LPPT
RNAV RWY03/35
GAIOS 5N, NAKOS 5N, TROIA 5N



Constraint level changed.

| SID Procedure Coding Table | | | | | | | | | | |
|----------------------------|------------|---------|---------------------------|----------------------------|---------|-------------------|-------------|-------|-----------|---------|
| Lisboa SID RNAV 1 GAIOS 5N | | | | | | | | | | |
| Path Terminator | Waypoint | | | Course/Track MAG (True) | Dist NM | Turn Direction | Constraints | | Nav Specs | Remarks |
| | Identifier | Flyover | Coordinates | | | | Level | Speed | | |
| CA | - | - | - | 026 (022.7) | - | - | +2000ft | - | RNAV 1 | - |
| DF | PT416 | - | 384941.30N 0090118.48W | - | - | Right | +3000ft | - | RNAV 1 | |
| TF | MONUR | - | 383829.92N 0085947.62W | 177 (173.9) | 11.24 | Right | +FL060 | - | RNAV 1 | |
| TF | GAIOS | - | 381631.88N 0083235.19W | 139 (135.6) | 30.63 | Left | - | - | RNAV 1 | |

| Designator | Route | After Take-off | | Remarks |
|-----------------|---|-----------------|--|---------|
| | | Climb to ALT/FL | Contact | |
| GAIOS 5N | Climb straight ahead. At or above 2000ft QNH turn right to PT416 - MONUR-GAIOS. | FL060 | LISBOA APPROACH. When passing 1000ft QNH mentioning only the call sign and passing altitude. 119.105 MHz as announced by ATIS departure. | - |

| SID Procedure Coding Table | | | | | | | | | | |
|----------------------------|------------|---------|---------------------------|----------------------------|---------|-------------------|-------------|-------|-----------|---------|
| Lisboa SID RNAV 1 NAKOS 5N | | | | | | | | | | |
| Path Terminator | Waypoint | | | Course/Track MAG (True) | Dist NM | Turn Direction | Constraints | | Nav Specs | Remarks |
| | Identifier | Flyover | Coordinates | | | | Level | Speed | | |
| CA | - | - | - | 026 (022.7) | - | - | +2000ft | - | RNAV 1 | - |
| DF | PT416 | - | 384941.30N 0090118.48W | - | - | Right | +3000ft | - | RNAV 1 | |
| TF | MONUR | - | 383829.92N 0085947.62W | 177 (173.9) | 11.24 | Right | +FL060 | - | RNAV 1 | |
| TF | NAKOS | - | 380000.00N 0092004.18W | 206 (202.6) | 41.64 | Right | - | - | RNAV 1 | |

| Designator | Route | After Take-off | | Remarks |
|-----------------|---|-----------------|--|---------|
| | | Climb to ALT/FL | Contact | |
| NAKOS 5N | Climb straight ahead. At or above 2000ft QNH turn right to PT416 - MONUR-NAKOS. | FL060 | LISBOA APPROACH. When passing 1000ft QNH mentioning only the call sign and passing altitude. 119.105 MHz as announced by ATIS departure. | - |

| SID Procedure Coding Table | | | | | | | | | | |
|----------------------------|------------|---------|---------------------------|----------------------------|---------|-------------------|-------------|-------|-----------|---------|
| Lisboa SID RNAV 1 TROIA 5N | | | | | | | | | | |
| Path Terminator | Waypoint | | | Course/Track MAG (True) | Dist NM | Turn Direction | Constraints | | Nav Specs | Remarks |
| | Identifier | Flyover | Coordinates | | | | Level | Speed | | |
| CA | - | - | - | 026 (022.7) | - | - | +2000ft | - | RNAV 1 | - |
| DF | PT416 | - | 384941.30N 0090118.48W | - | - | Right | +3000ft | - | RNAV 1 | |
| TF | MONUR | - | 383829.92N 0085947.62W | 177 (173.9) | 11.24 | Right | +FL060 | - | RNAV 1 | |
| TF | TROIA | - | 380423.71N 0085244.95W | 174 (170.7) | 34.52 | - | - | - | RNAV 1 | |

| Designator | Route | After Take-off | | Remarks |
|-----------------|---|-----------------|--|---------|
| | | Climb to ALT/FL | Contact | |
| TROIA 5N | Climb straight ahead. At or above 2000ft QNH turn right to PT416 - MONUR-TROIA. | FL060 | LISBOA APPROACH. When passing 1000ft QNH mentioning only the call sign and passing altitude. 119.105 MHz as announced by ATIS departure. | - |