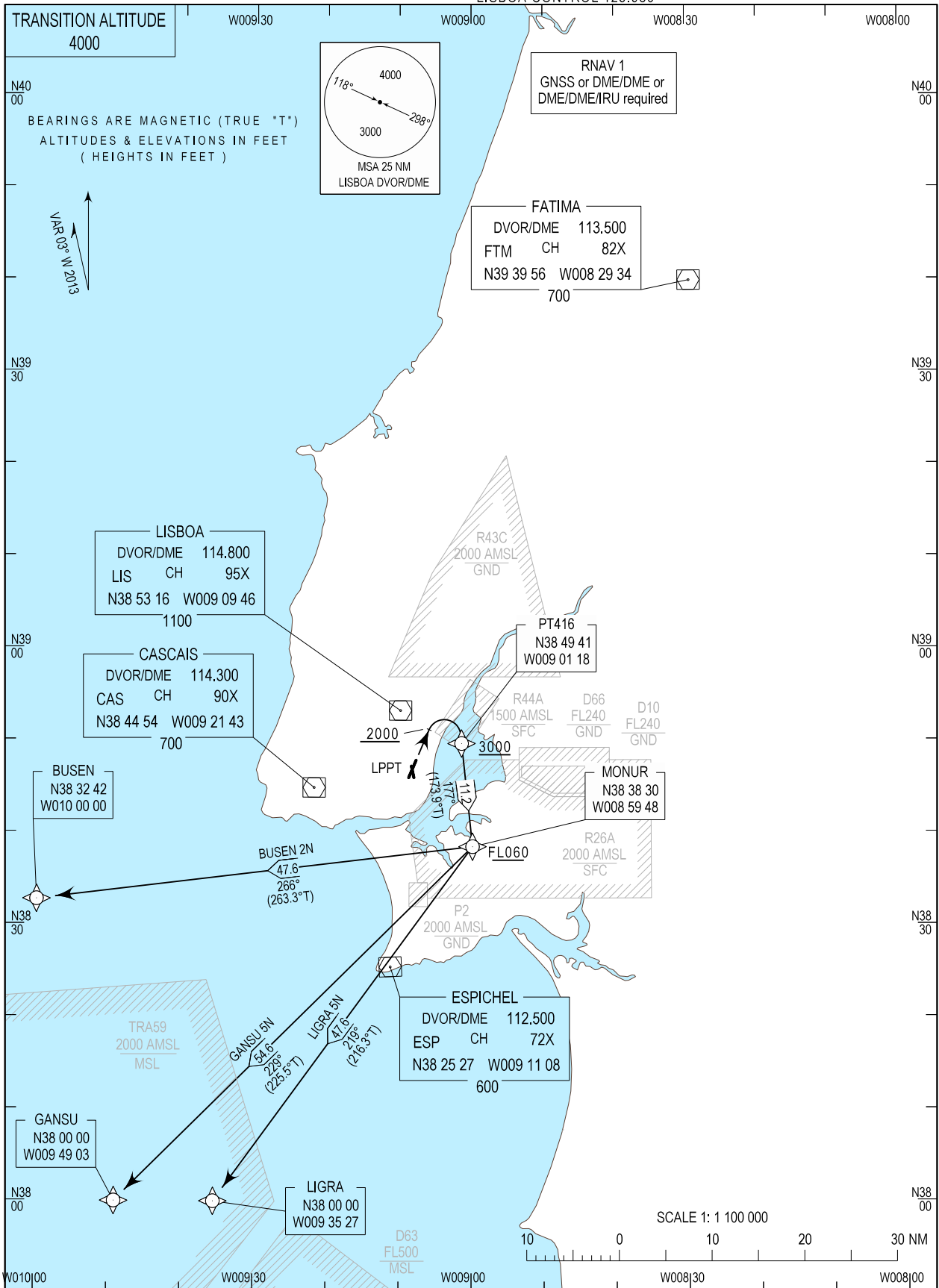


STANDARD DEPARTURE CHART -
INSTRUMENT (SID) - ICAO

LISBOA DEP INFORMATION 121.955
LISBOA TOWER 118.105
LISBOA APPROACH 119.105
LISBOA CONTROL 123.980

LISBOA / LPPT
RNAV RWY03/35
BUSEN 2N, GANSU 5N, LIGRA 5N



Constraint level changed.

SID Procedure Coding Table										
Lisboa SID RNAV 1 RWY 03/35 - BUSEN 2N										
Path Terminator	Waypoint			Course/Track MAG (True)	Dist NM	Turn Direction	Constraints		Nav Specs	Remarks
	Identifier	Flyover	Coordinates				Level	Speed		
CA	-	-	-	026 (022.7)	-	-	+2000ft	-	RNAV 1	-
DF	PT416	-	384941.30N 0090118.48W	-	-	Right	+3000ft	-	RNAV 1	
TF	MONUR	-	383829.92N 0085947.62W	177 (173.9)	11.24	Right	+FL060	-	RNAV 1	
TF	BUSEN	-	383241.98N 0100000.00W	266 (263.3)	47.56	Right	-	-	RNAV 1	

Designator	Route	After Take-off		Remarks
		Climb to ALT/FL	Contact	
BUSEN 2N	Climb straight ahead. At or above 2000ft QNH turn right to PT416 - MONUR - BUSEN.	FL060	LISBOA APPROACH. When passing 1000ft QNH mentioning only the call sign and passing altitude. 119.105 MHz as announced by ATIS departure.	Critical DME: ESP, MTR and NSA at FL060 until 60 NM.

SID Procedure Coding Table										
Lisboa SID RNAV 1 RWY 03/35 - GANSU 5N										
Path Terminator	Waypoint			Course/Track MAG (True)	Dist NM	Turn Direction	Constraints		Nav Specs	Remarks
	Identifier	Flyover	Coordinates				Level	Speed		
CA	-	-	-	026 (022.7)	-	-	+2000ft	-	RNAV 1	-
DF	PT416	-	384941.30N 0090118.48W	-	-	Right	+3000ft	-	RNAV 1	
TF	MONUR	-	383829.92N 0085947.62W	177 (173.9)	11.24	Right	+FL060	-	RNAV 1	
TF	GANSU	-	380000.00N 0094903.18W	229 (225.5)	54.61	Right	-	-	RNAV 1	

Designator	Route	After Take-off		Remarks
		Climb to ALT/FL	Contact	
GANSU 5N	Climb straight ahead. At or above 2000ft QNH turn right to PT PT416 - MONUR - GANSU.	FL060	LISBOA APPROACH. When passing 1000ft QNH mentioning only the call sign and passing altitude. 119.105 MHz as announced by ATIS departure.	-

SID Procedure Coding Table										
Lisboa SID RNAV 1 RWY 03/35 - LIGRA 5N										
Path Terminator	Waypoint			Course/Track MAG (True)	Dist NM	Turn Direction	Constraints		Nav Specs	Remarks
	Identifier	Flyover	Coordinates				Level	Speed		
CA	-	-	-	026 (022.7)	-	-	+2000ft	-	RNAV 1	-
DF	PT416	-	384941.30N 0090118.48W	-	-	Right	+3000ft	-	RNAV 1	
TF	MONUR	-	383829.92N 0085947.62W	177 (173.9)	11.24	Right	+FL060	-	RNAV 1	
TF	LIGRA	-	380000.00N 0093527.06W	219 (216.3)	47.61	Right	-	-	RNAV 1	

Designator	Route	After Take-off		Remarks
		Climb to ALT/FL	Contact	
LIGRA 5N	Climb straight ahead. At or above 2000ft QNH turn right to PT416 - MONUR- LIGRA.	FL060	LISBOA APPROACH. When passing 1000ft QNH mentioning only the call sign and passing altitude. 119.105 MHz as announced by ATIS departure.	-