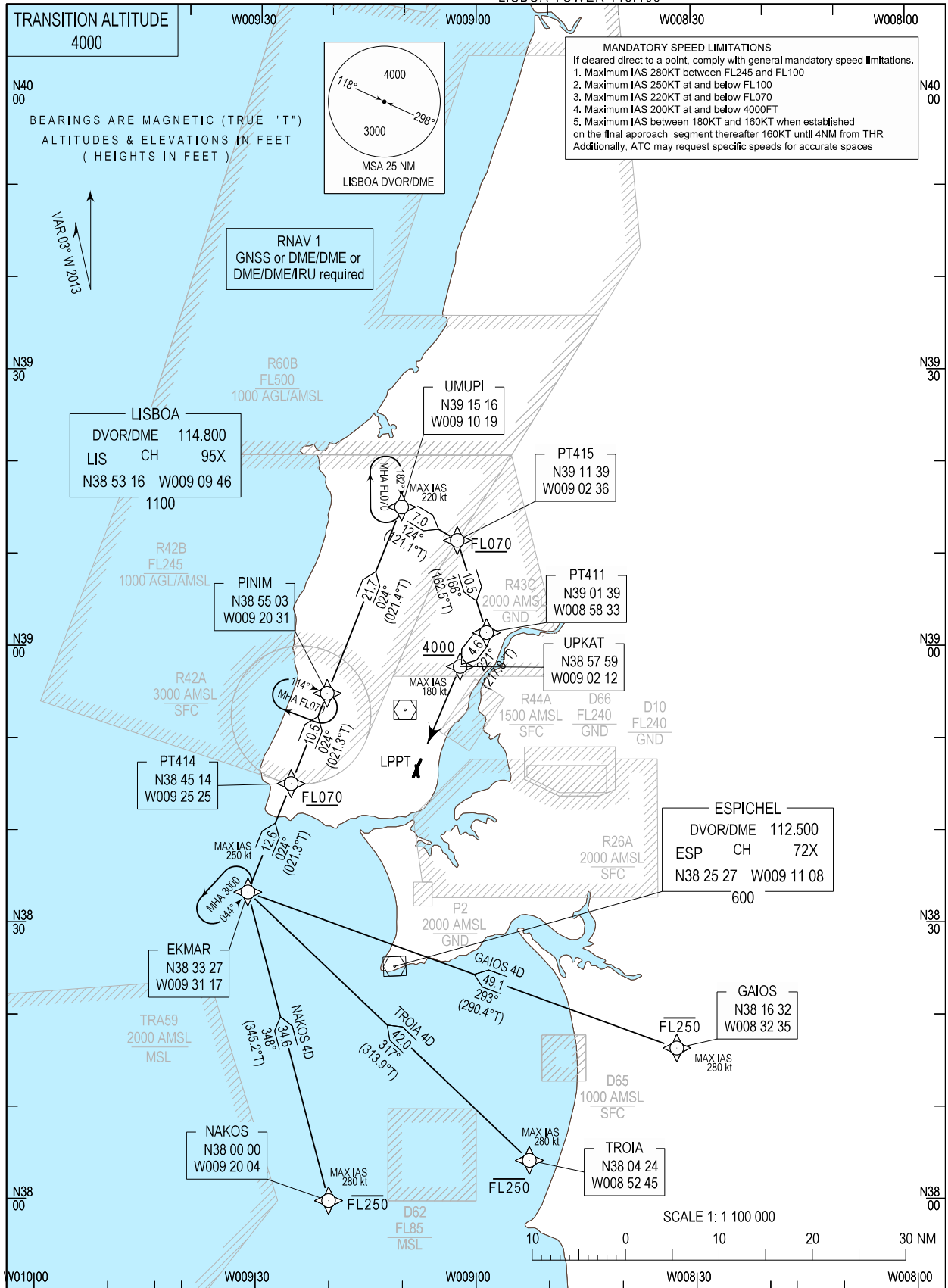


STANDARD ARRIVAL CHART -
INSTRUMENT (STAR) - ICAO

LISBOA ARR INFORMATION 124.155
LISBOA CONTROL 123.980
LISBOA APPROACH 119.105
LISBOA ARRIVAL 125.130
LISBOA TOWER 118.105

LISBOA / LPPT
RNAV Rwy 21
GAIOS 4D, NAKOS 4D, TROIA 4D



STANDARD INSTRUMENT ARRIVAL (STAR) RUNWAY 21										
RNAV 1 – GNSS or DME/DME or DME/DME/IRU										
STAR RNAV 1 GAIOS 4D RWY 21										
Procedure Coding Table										
Path Terminator	Waypoint			Course/Track MAG (True)	Dist NM	Turn Direction	Constraints		Nav Specs	Remarks
	Identifier	Flyover	Coordinates				Level	Speed		
IF	GAIOS	-	381631.88N 0083235.19W	-	-	-	-FL250	280Kt	RNAV 1	Clearance limit: UPKAT
TF	EKMAR	-	383326.56N 0093117.20W	293 (290.4)	49.13	-	-	250Kt	RNAV 1	
TF	PT414	-	384513.74N 0092525.26W	024 (021.3)	12.64	Right	+FL070	-	RNAV 1	
TF	PINIM	-	385502.70N 0092030.55W	024 (021.3)	10.53	-	-	-	RNAV 1	
TF	UMUPI	-	391516.46N 0091018.55W	024 (021.4)	21.72	-	-	220Kt	RNAV 1	
TF	PT415	-	391139.36N 0090235.77W	124 (121.1)	7.00	Right	+FL070	-	RNAV 1	
TF	PT411	-	390139.34N 0085833.34W	166 (162.5)	10.48	Right	-	-	RNAV 1	
TF	UPKAT	-	385759.04N 0090212.05W	221 (217.8)	4.64	Right	+4000ft	180Kt	RNAV 1	

STAR RNAV 1 NAKOS 4D RWY 21										
Path Terminator	Waypoint			Course/Track MAG (True)	Dist NM	Turn Direction	Constraints		Nav Specs	Remarks
	Identifier	Flyover	Coordinates				Level	Speed		
IF	NAKOS	-	380000.00N 0092004.18W	-	-	-	-FL250	280Kt	RNAV 1	Clearance limit: UPKAT
TF	EKMAR	-	383326.56N 0093117.20W	348 (345.2)	34.56	-	-	250Kt	RNAV 1	
TF	PT414	-	384513.74N 0092525.26W	024 (021.3)	12.64	Right	+FL070	-	RNAV 1	
TF	PINIM	-	385502.70N 0092030.55W	024 (021.3)	10.53	-	-	-	RNAV 1	
TF	UMUPI	-	391516.46N 0091018.55W	024 (021.4)	21.72	-	-	220Kt	RNAV 1	
TF	PT415	-	391139.36N 0090235.77W	124 (121.1)	7.00	Right	+FL070	-	RNAV 1	
TF	PT411	-	390139.34N 0085833.34W	166 (162.5)	10.48	Right	-	-	RNAV 1	
TF	UPKAT	-	385759.04N 0090212.05W	221 (217.8)	4.64	Right	+4000ft	180Kt	RNAV 1	

STAR RNAV 1 TROIA 4D RWY 21										
Path Terminator	Waypoint			Course/Track MAG (True)	Dist NM	Turn Direction	Constraints		Nav Specs	Remarks
	Identifier	Flyover	Coordinates				Level	Speed		
IF	TROIA	-	380423.71N 00985244.95W	-	-	-	-FL250	280Kt	RNAV 1	Clearance limit: UPKAT
TF	EKMAR	-	383326.56N 0093117.20W	317 (313.9)	41.98	-	-	250Kt	RNAV 1	
TF	PT414	-	384513.74N 0092525.26W	024 (021.3)	12.64	Right	+FL070	-	RNAV 1	
TF	PINIM	-	385502.70N 0092030.55W	024 (021.3)	10.53	-	-	-	RNAV 1	
TF	UMUPI	-	391516.46N 0091018.55W	024 (021.4)	21.72	-	-	220Kt	RNAV 1	
TF	PT415	-	391139.36N 0090235.77W	124 (121.1)	7.00	Right	+FL070	-	RNAV 1	
TF	PT411	-	390139.34N 0085833.34W	166 (162.5)	10.48	Right	-	-	RNAV 1	
TF	UPKAT	-	385759.04N 0090212.05W	221 (217.8)	4.64	Right	+4000ft	180Kt	RNAV 1	