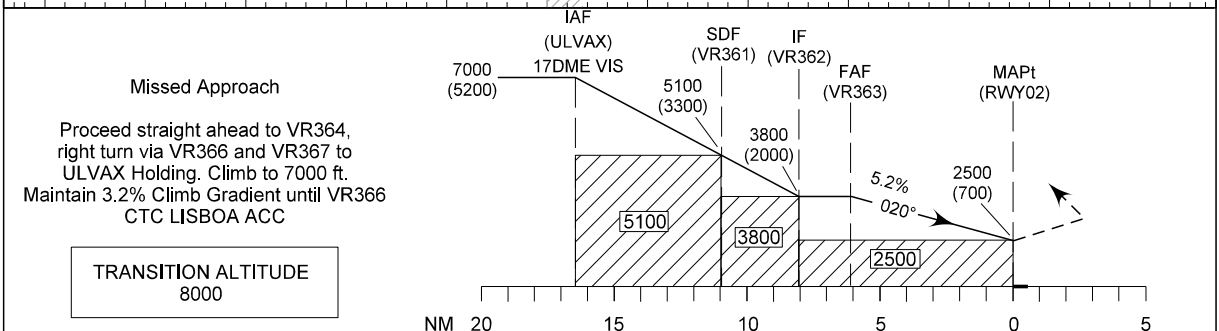
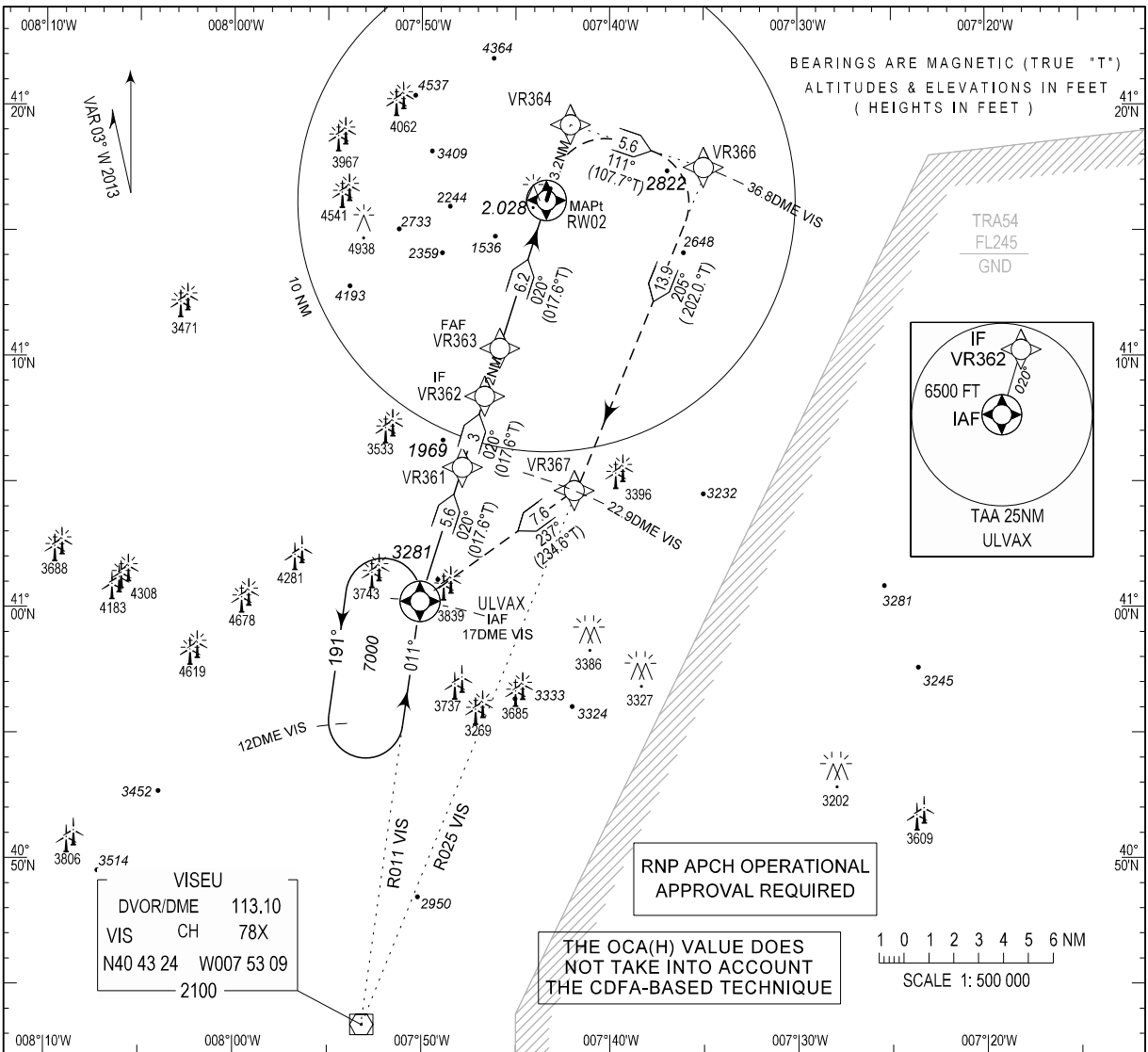


INSTRUMENT
APPROACH
CHART - ICAO

AD ELEV 1832ft
HEIGHTS RELATED
THR RWY 02 - ELEV 1800ft

LISBOA CONTROL 132.305
LISBOA INFORMATION 130.900
VILA REAL INFORMATION 122.900

VILA REAL / LPVR
RNAV (GNSS)
RWY02
CAT A-B



OCA (H)				Missed Approach Climb Gradient
CAT of ACFT	A	B		
LNAV	2500(700)	2500(700)		3.2% *
CIRCLING	EAST 02/20	2650(850)	2850(1050)	
	WEST 02/20	2500(700)	2500(700)	

* Missed Approach 3.2% climb gradient shall be maintained until VR366

(See verso of the chart, table for data integrators)

New CS and FREQ.

INSTRUMENT APPROACH RNAV (GNSS) RWY02

Designator	Path Terminator	WPT Name	Coordinates	Fix	F.O	Course (True Bearing)	Turn Direction	Altitude Constraint	Vertical Path Angle
RNAV RWY02	IF	ULVAX	410015.24N 0075004.37W	IAF	Y			7000FT	
	TF	VR361	410535.50N 0074750.12W	SDF		017.593°		5100FT	
	TF	VR362	410825.02N 0074638.91W	IF		017.617°		3800FT	
	TF	VR363	411019.45N 0074550.78W	FAF		017.631°		3800FT	
	TF	RW02	411613.05N 0074321.73W	Mapt	Y	017.639°		2500FT	
	TF	VR364	411913.91N 0074205.33W	Mapt 1		017.665°			3.2%
	TF	VR366	411731.50N 0073500.11W	Mapt 2		107.679°	R		3.2%
	TF	VR367	410439.78N 0074153.00W	Mapt 3		202.046°	R		2.5%
	TF	ULVAX	410015.24N 0075004.37W	Holding Fix		234.638°	R		2.5%